



REMESO

Institute for Research on
Migration, Ethnicity
and Society

*FAS Centre of
Excellence*

REMESO

Yearly Report 2007–2009

CONTENT

REMESO	2
Our mission	3
Organisation	5
The REMESO Steering Board.....	7
The International Advisory Board	8
Key Functions	9
Staff.....	11
Research.....	17
1. International Migration, Changing Welfare Regimes and the Political Economy of Ethnic Labour Market Segmentation	19
2. Ethnic Divisions, Social Exclusion/Inclusion and the Reconstitution of Normative and Legal Frameworks	22
3. Post-National Strategies for Growth, Inclusion and Diversity	25
4. Studies on Health, Migration and Ethnic Relations	28
5. Studies on Migration, Citizenship and Politics of Belonging	29
6. Databases and Surveys	32
Research Communication and Dissemination.....	35
Publications.....	36
Seminars	50
Workshops and Conferences	54
Workshop- and Conference participation	56
Academic Networks and Editorial Assignments	64
Stakeholder Cooperation.....	67
Education.....	73
REMESO Graduate School in Migration, Ethnicity and Society	74
Doctoral Studies Programme (PhD Education).....	76
Ongoing Doctoral Student Thesis Supervision.....	77
Financial report.....	79

REMESO

REMESO – Institute for Research on Migration, Ethnicity and Society – pursues interdisciplinary research, education and knowledge dissemination on transnational migration, ethnic diversity and citizenship. It is a national centre of excellence funded by the Swedish Council for Working Life and Social Research (FAS) and Linköpings University (LiU), with additional funding from the Municipality of Norrköping and several other agencies. The Institute was formally founded by Linköping University in 2008 on the basis of an integrated research programme developed since the late 1990s. It gathers around 30 researchers, coming from different settings. Some have a background in LiU's former Department of Ethnic Studies, some in research on migration, labour and citizenship at the former National Institute for Working Life. REMESO is based administratively in the LiU Department of Social and Welfare Studies (ISV) in Norrköping, employing most of its staff, but also includes researchers from other LiU departments; for example the Department of Management and Engineering (IEI) and the Department for Studies of Social Change and Culture (ISAK) at Linköping University.

This report spans the development of the REMESO research environment from the spring of 2007 to December 2009. Since 2007 a Graduate School in Migration, Ethnicity and Society has been developed and a Doctoral studies programme in Migration and Ethnic Studies re-launched with several students graduating for the Doctoral and Licentiate degrees. The Graduate School courses have been attended by more than 80 national and international PhD- and MA-students from around 20 different countries. The School offers courses and training at postgraduate level taught by REMESO faculty and international guest lecturers.

A broad research programme with more than 40 separate research projects has been started up. REMESO also participates in and manages international academic networks and stakeholder cooperation, has hosted international visitors for shorter or longer stays, post-doctoral scholars and visiting PhD students, as well as PhD- and Master students who have participated in courses of the *Remeso Graduate School*.

REMESO has also arranged workshops and conferences, both on Campus and abroad (Istanbul). In May 2009, a two-day Inauguration Conference was arranged: *Migration, Citizenship and Precarious Labour: Global and Regional Perspectives in Times of Crisis*, with participation of leading Swedish and International Scholars.

The Institute has developed collaboration with several departments at LiU, not least through active engagement in LiU education at several Departments and in different programs. It has also built an informative website where it displays research- and educational activities, report news and through which it communicates with the surrounding academic community and stakeholders.

Our mission

Immigration, integration, multiculturalism, and what is sometimes labelled 'illegal' migration, are the focus of controversial debates in political life and public policy today. As is well known, the European Union is now implementing ever stricter border controls with call for more stringent policies of assimilation towards immigrants. Somewhat paradoxically, there is a parallel, tacitly accepted, inflow in many countries of irregular migrants from less developed regions, providing much needed human resources but working under 'informal', often under-paid and precarious conditions. Yet, often lacking in debates on migration are links to broader questions about globalisation, the future of the welfare state, the standards of decency in the workplace and, the future for a democratic society.

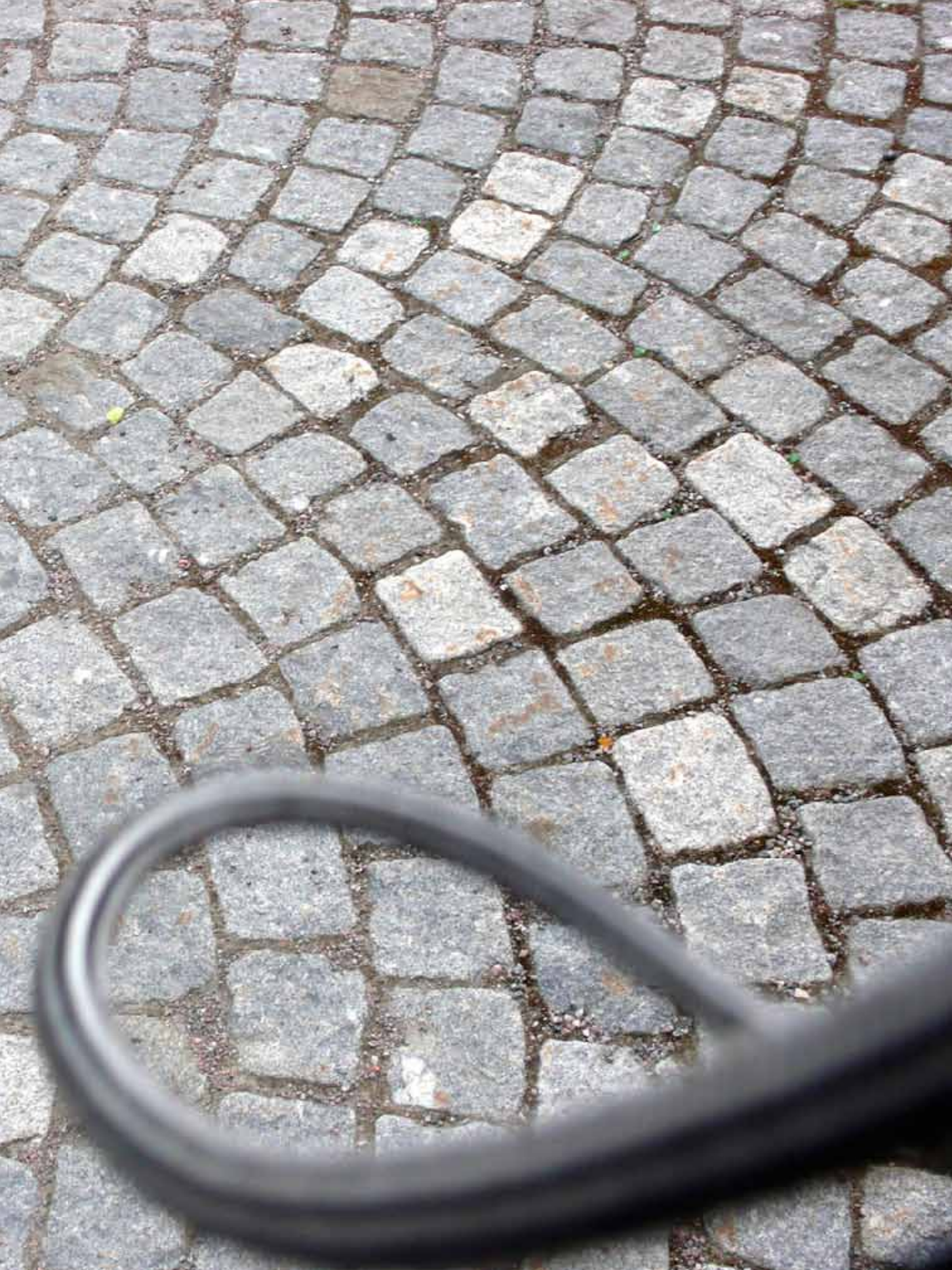
To understand the processes at play and their possible outcomes, there is an increasing need to strengthen interdisciplinary research to account for the complexity of migration, welfare and work in a world of increasing disparities and growing inequalities. A relevant research agenda today faces the task of bridging the gap between traditionally separate fields of, on the one hand, *ethnic studies, migration, citizenship and diversity* and, on the other hand, *globalisation, labour market changes and working life*.

To address this task REMESO has launched a broad interdisciplinary research programme, developing quantitative and qualitative databases, in order to study EU-wide and national government policies, the politics of migration and racism, the role of private enterprise and trade unions in practices of labour market integration, and changes in welfare access, in terms of their consequences for citizenship rights of migrants, asylum seekers and ethnic minorities. The Institute thus currently manages a number of major research projects and complementary clusters as part of its overall programme.

Also a crucial tool to make an imprint on the wider European research and policy agenda is the REMESO Graduate School in Migration, Ethnicity and Society. Students and faculty come from all over Europe and beyond. During its first year, a variety of courses have been successfully delivered reflecting both empirical research and theoretical developments within the research fields of relevance.

Hence, our mission is clear—the concerted programme of REMESO researchers and the training of a new generation of researchers in its Graduate School and Doctoral studies programme will contribute to the European and international research agenda on migration and ethnicity, with a distinctive focus on integrating the study of labour market issues with questions of citizenship and human and social rights.

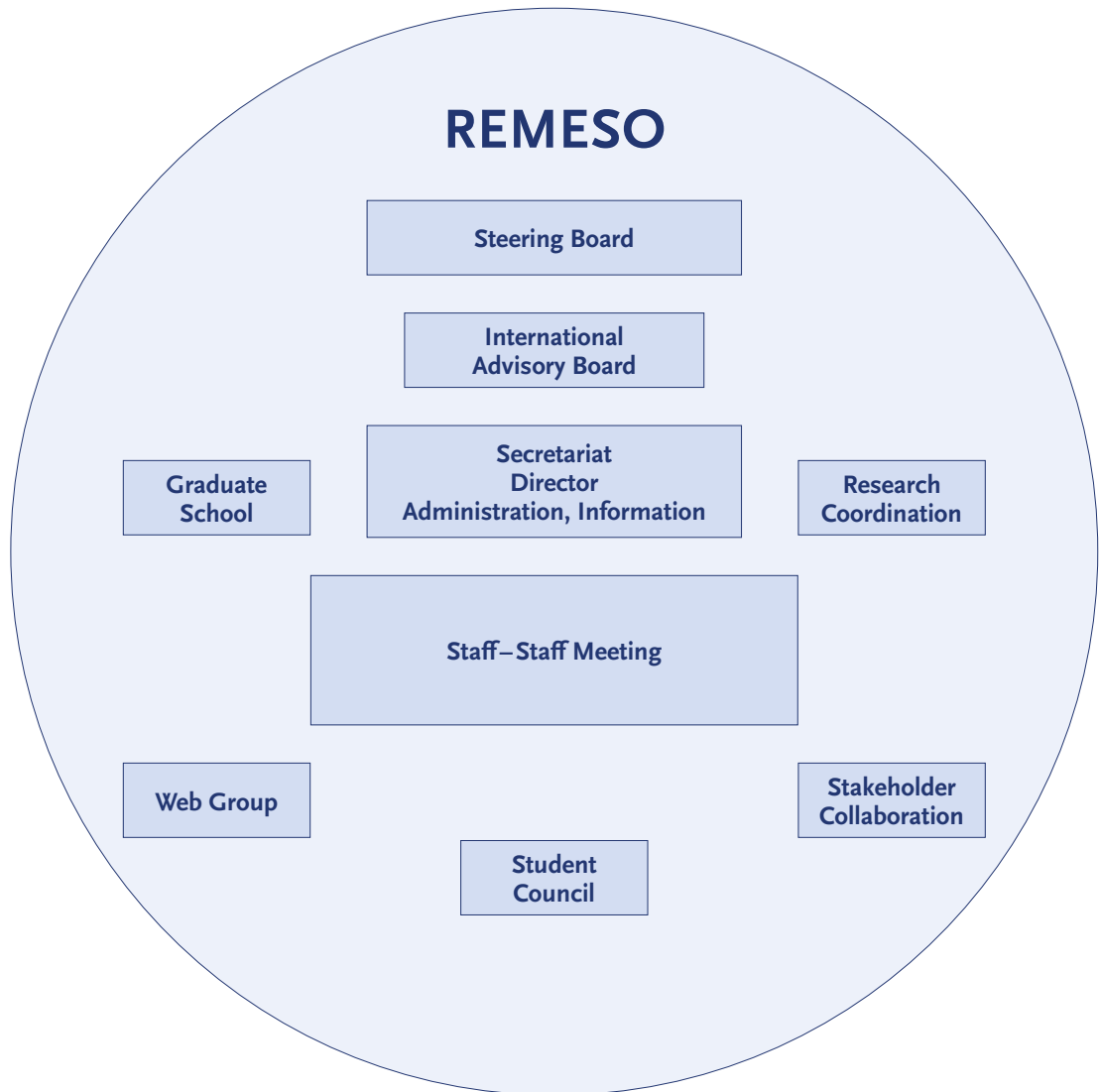
Carl-Ulrik Schierup
Director REMESO



ORGANISATION

During its first years REMESO has worked intensively to develop an efficient organisation that is a base for a creative research- and education institute. The Institute has built capacity to act as a host for visiting scholars and students, to readily answer to demands for expert knowledge from the wider society, stakeholders and policy actors and surrounding academic milieus, as well as produce

first class education within migration studies through its Graduate School and PhD programme. Of central importance has also been the work to actively integrate the activities of the Institute with the surrounding university through, communication, teaching and supervision) in various programmes at LiU, as well as through research collaborations across different Departments and research groups.



The REMESO Steering Board

The Board is responsible for monitoring the overall direction and strategic development of the Institute) and overseeing the budget in accordance with instructions from the university. The steering board is chaired by former Swedish minister of health & social affairs, Bengt Westerberg. The board includes academic representatives from several LiU-departments, from major Swedish centres in EMS (SULCIS and MIM/IMER). The REMESO *Doctoral Students Council* elects two members of the Steering Board. The board meets four times a year.

Chair

BENGT WESTERBERG, Chairman
Chairman of the University Board and
The Swedish Red Cross

Members

ALEKSANDRA ÅLUND, Professor
REMESO, Linköping University

BOEL BERNER, Professor
The Tema Institute, Linköping University

BJÖRN FRYKLUND, Professor
Malmö Institute for Studies of Migration,
Diversity and Welfare (MIM), Malmö College

ANITA GÖRANSSON, Professor
The Tema Institut, Linköping University

CHRISTER KNUTHAMMAR, University Council
Linköping University

LARS STJERNKVIST, Municipal Commissioner
Norrköping Municipality

ELISABETH SUNDIN, Professor
Department of Management and Engineering
(IEI), Linköping University

CAROLINE TOVATT, PhD candidate
REMESO, Linköping University

RAGNAR ANDERSSON, PhD candidate
REMESO, Linköping University

Adjunct

PER DANNETUN, Research Coordinator
Linköping University

BO HELLGREN, Dean
Faculty of Arts and Sciences,
Linköping University

JÖRGEN NISSEN, Head of Department
The Department for Social and Welfare Stud-
ies, Linköping University

Others

EVA REHNHOLM, Coordinator
REMESO, Linköping University

CARL-ULRIK SCHIERUP, Professor and Director
REMESO, Linköping University



The International Advisory Board

The International Advisory Board is an academic consultative body advising the REMESO Steering Board, the Director and the steering groups for research and education. The advisory board includes prominent scholars active at European and North American centres for research and education in EMS. Members are invited to spend periods at REMESO to engage in research cooperation and teaching.

FLOYA ANTHIAS, Professor of Sociology and social justice at Roehampton University, London. School of Business and Social Science.

URSULA APITZCH, Professor of Political Science and Sociology at J.W. Goethe-University of Frankfurt/Main and member of the Board of Directors of the Frankfurt Centre for Women's and Gender Studies CGC.

THOMAS BOJE, Professor in Social Science at Roskilde University, Denmark. Boje is Director for CINEFOGO–The Network on Civil Society and New Forms of Governance in Europe–the Making of European Citizenship.

GRETE BROCHMAN, Professor of Sociology at the University of Oslo.

STEPHEN CASTLES, Research Chair in Sociology at the University of Sydney Professor of Migration and Refugee Studies, until August 2009 he was Director of the International Migration Institute (IMI), at the University of Oxford.

RONALDO MUNCK, Professor of Sociology and Theme Leader for Internationalisation and Interculturalism at Dublin City University.

JAN RATH, Professor of Urban Sociology at the University of Amsterdam, Director of the Institute for Migration and Ethnic Studies (IMES). Leading member of the IMISCOE Network of Excellence.

GÜLAY TOKSÖZ, Professor of Labour Economics at Ankara University, Department of Labour Economics and Industrial Relations, 2004–2008. Director of the Women's Studies Department in Ankara University, 2008–2009.

LOÏC WACQUANT, Professor of Sociology at the University of California, Berkeley, and Researcher at the Centre de sociologie européenne, Paris.



Key Functions

■ The Director

The Director, Professor Carl-Ulrik Schierup, is responsible for the management and the scientific leadership of the Institute, for reporting to the Steering Board, the vice-chancellor, the Faculty and to FAS. The Director delegates specific administrative responsibilities to a *co-director*. The director is assisted by the secretariat.

■ Staff Meeting

The Monthly Staff Meeting (including researchers, doctoral students, and administrative staff) is chaired by the Director. Plans and proposals to be taken up with the Steering Board and decision-making bodies at department, faculty and university level are brought up at the Staff Meeting for discussion.

■ The Secretariat

The secretariat organises meetings with staff members and special teams assigned with responsibility to coordinate education and research, seminars, information and publication activities, databases, library services, and stakeholder cooperation. The secretariat is provided with technical and administrative support by the host department, ISV.

■ Research Coordination

The Steering Group for Research Coordination is responsible for monitoring and reporting on the REMESO–FAS research programme, *Labour Market Restructuring, Migration and Social Inclusion* and other research areas at the institute. The steering group is headed by the Director (C. Schierup) assisted by a co-director (A. Neergaard). It includes scientifically responsible coordinators for the research areas of the Institute.

■ Education

The Steering Group for Education is responsible for the management of graduate

and undergraduate education, including the *REMESO Graduate School*. Members of the steering group represent the institute at the Departmental and Faculty levels. The steering group includes the Director and the co-director of the Graduate School (A. Ålund and P. Hansen), the Graduate School coordinator (T. Puskas), the EMS Ph D programme coordinator (Z. Slavnic), the coordinator for undergraduate education (M. Dahlstedt) and a doctoral student representative.

■ Dissemination and information

Erik Berggren, Head of Information, is responsible for the dissemination of information about the Institute's activities. This entails creating a web site, information about the Graduate School, and workshops and conferences organised by REMESO. Internally, the information officer is responsible for registration in the LiU publication database and library catalogues and connecting the Institute to its neighbouring departments, administratively and academically. The information officer is also Editor of the REMESO working paper series, *TheMES on Migration and Ethnic Studies* and acts as editor of evaluations and yearly reports.

■ The Doctoral Students Council

The Doctoral Students Council delegates one representative (Martin Qvist) to the Steering Group for Education. The Doctoral Student Council can also raise different issues related to the PhD education and/or the Institute's development and bring to the Staff meeting for discussion.

■ Special teams

Special teams organise seminars, workshops and conferences, manage research networks, organize the inflow of international visiting researchers, publication series, and act as a reference group for the web page and e-journal development.



STAFF

JOSEFIN ANDERSSON is an expert at REMESO and a member of the European Social Fund's Thematic Group on Inclusion (TIA). She studies how integration projects aim at developing a social economy and an alternative labour market.

ALIREZA BEHTOUI is a Research Fellow at REMESO. He received his PhD in 2006. He studies the impact of social capital for stratification processes in transitions from school to work and on the labour market with a focus on factors such as socioeconomic background, gender and ethnicity.

ERIK BERGGREN is responsible for research dissemination and information at REMESO. He is editor of *TheMES*—the Institute's working paper series. He has an MA in Political Science from New School for Social Research, New York (1995).

ANNA BREDSTRÖM is a researcher at REMESO. She defended her PhD dissertation in 2008. Her research focus on youth, intersectionality and sexual health. During the autumn of 2009 she was Visiting Fellow at the Centre of Gender Excellence (GEXcel), LiU.

MAGNUS DAHLSTEDT is a Postdoctoral Fellow at REMESO. He investigates the politics of inclusion/exclusion and multicultural democracy, activism and civil society in changing welfare states. Currently he studies immigrant youth and political participation in the suburbs of contemporary multi-ethnic Sweden.

ÅSA-KARIN ENGSTRAND is a researcher at REMESO. She organises research on EU projects aiming at social inclusion within the European Social Fund's Thematic Group on Inclusion (TIA). Her research involves precarious employment, ethnic entrepreneurship and intersectionality. She is also a teacher in organisation studies, human resource management and entrepreneurship at LiU.

BJÖRN FRYKLUND is Professor in Sociology at Malmö University. He is affiliated to REMESO through an agreement for collaboration between REMESO and the programme International Migration and Ethnic Relations, Malmö. His research interest includes populism, xenophobia and migration.

SABINE GRUBER works as a Lecturer at ISV and a Research Fellow at REMESO. Her dissertation from 2007 concerns the construction of images of ethnicity and social belonging in Swedish schools. Her research focuses on constructions of ethnic relations in different welfare institutions and practices.

PEO HANSEN is political scientist and Associate Professor at REMESO. He received his PhD at Umeå University in 2000. Hansen's main research is on the development of European integration, including the impact of Europe's colonial legacy. He has written extensively on the questions of migration, citizenship and identity as these relate to the political economy of European integration.

RUNE JOHANSSON is Professor Emeritus at REMESO and Associate Professor of History at the University of Lund. His research investigates ethnic and national conflict in a comparative perspective. His current research focuses on norms underpinning refugee- and migration policies in a Swedish and comparative perspective.

STEFAN JONSSON is Associate Professor of Ethnic studies. He received his PhD from the Program in Literature at Duke University, USA, in 1997. He explores the colonial origins of the process of European integration. He has written, in Swedish several books on racism, multiculturalism, identity politics, postcolonial culture, and globalization. Currently he is also completing a history of the notion of 'the masses' in European culture.

MARTIN KLINTHÄLL is an Assistant Professor at REMESO and the Department of Management and Engineering (IEI). His research interests lie within the areas of economic demography, migration and labour, and integration and health. His main current research is on the importance of social networks for educational and labour market careers of young people of immigrant background.

KHALID KHAYATI is researcher at REMESO. He received his PhD in the spring of 2008. His dissertation is a study of Kurdish diasporas in Sweden and France: *From Victim Diaspora to Transborder Citizenship? Diaspora Formation and Transnational Relations among Kurds in France and Sweden*.

MAGNUS KLOFSTEN is Professor and founding director of the Centre for Innovation and Entrepreneurship (CIE), a Helix Vinnova Excellence Centre research partner at the Department of Management and Engineering (IEI). He is affiliated to REMESO. His research interests lie in early development processes in knowledge intensive businesses, business support systems, idea development and university-industry links.

BRANKA LIKIĆ-BRBORIĆ is a Research Fellow at REMESO. She is also a Research Fellow at the Department of Government, Uppsala University. Her research looks at the rise and development of post-Keynesianism, globalization, the transition from socialist to market economies and the impact on the migratory landscape in Europe.

PAULA MULINARI is a researcher at REMESO. She received her dissertation in 2007. Her research interest concern how informal networks and recruitment shape workers possibilities to enter the labour market, their working conditions, labour mobility and careers.

ANDERS NEERGAARD is Associate Professor at REMESO. He is co-director of the Steering group for research coordination. His research focus on labour market changes, recruitment, trade unions, informalisation, migration, populism, discrimination, racialisation, ethnicity, class and gender.

TÜNDE PUSKÁS is a researcher and coordinator of the REMESO Graduate School. She received her PhD in 2009 with the title *'We belong to them' – Narratives of Belonging, Homeland and Nationhood in Territorial and Non-territorial Minority Settings*. Her dissertation was a study of how ethnic and national categories are constructed, negotiated a re-constructed in everyday practice and in narratives. Currently her research focuses on how language policies

are implemented into everyday school practice and on multilingualism in schools.

ANNA-CARIN RAMSTEN is finishing her PhD at Gothenburg University. She works as a coordinator for the European Social Fund's Thematic Group on Inclusion (TIA) and Administrative Coordinator of REMESO. Her research interests concern implications of new technology for work practices.

EVA REHNHOLM is Coordinator at REMESO. She is also engaged as Registrar and secretary of the council for Education and Research at the Department for Social and Welfare Studies.

MIKAEL RUNDQVIST is the Director of the European Social Fund's Thematic Group on Inclusion (TIA). He has a PhD in political science from Gothenburg University (1998).

CARL-ULRIK SCHIERUP is Professor and Director of REMESO. He has a Mag.Art. Thesis in anthropology from the University of Aarhus, 1977, (nostrified as Swedish PhD 1983) and a Doctorate in sociology at Umeå University from 1987. His research interests include issues of migration, citizenship, nationalism and multiculturalism. He is currently developing comparative studies on irregular migration, precarious work and trade union and civil society involvement.

ZORAN SLAVNIC is a researcher at REMESO and a lecturer in the programme for Social and Cultural Analysis (SKA), at LiU. His research focuses on the informalisation of the economy, re-commodification of labour and migration and subcontracting. He is also engaged in developmental work for a qualitative research database.

MARITTA SOININEN is a Professor at REMESO and at the Department of Political Science, Stockholm University. She studies public policy, implementation and political participation with a focus on migration and ethnic relations. Her research includes organisational analysis as well as comparative policy analysis of institutional discrimination and policies of anti-discrimination within Sweden and the EU.

ELISABETH SUNDIN is Professor at the Department of Management and Engineering (IEI) and affiliated to REMESO. She is one of the senior researchers in *HELIX Research and Innovation Centre* at LiU. She is also scientific advisor and leader of the Women's Entrepreneurship Research Program (FEM).

JOSEFINA SYSSNER is a Post Doctoral Fellow at REMESO. Her background is in Social, Economic and Political Geography and her research address questions of relations of space, place, power and politics. She defended her thesis *What Kind of Regionalism? – Regionalism and Region Building in Northern European Peripheries* in 2006.

SUSANNE URBAN is a Research Fellow at REMESO. Her current research focuses on social stratification and polarisation in terms of class and ethnicity. She also studies neighbourhood effects, social capital and intergenerational mobility in education and the labour market.

VIKTOR VESTERBERG is an Expert at REMESO and a member of the European Social Fund's Thematic Group on Inclusion (TIA). Vesterberg investigates different methods for inclusion and increased employability as they are conceptualized within policy and public projects.

CHARLES WOOLFSON is Professor of Labour Studies at REMESO. Previously he was Professor at the School of Law and an associate member of Centre for Research on Racism, Ethnicity and Nationalism at the University of Glasgow, Scotland. His research interests are on labour standards, labour inspection, working environment and regulatory regimes, trade unions, industrial relations and informal economy as related to labour migration, racism and xenophobia.

ALEKSANDRA ÅLUND is Professor at REMESO and Director of the REMESO Graduate School. She pursues studies within the sociology of migration with a focus on gender, youth and community studies, emergence of new ethnicities, social relations and cultural production, as well as issues of urban segregation, political marginalisation and social exclusion/inclusion.

■ Visiting Researchers

AIMEE RINDOKS is a PhD candidate at The Institute for Migration and Ethnic Studies at University of Amsterdam. She analyses the increased demand on qualified labour in relation to the rhetoric of 'knowledge economy,' globalisation and migration. She is a visiting PhD candidate during the academic year 2009/10.

NAZLI SENSES is a PhD candidate from the Bilkent University, Turkey. She studies She studies the policies and politics directed towards irregular immigration in a comparative perspective, specifically the extent of rights granted to irregular migrants. She received a research fellowship from the Scientific and Technological Research Council of Turkey (TUBITAK) to do research at REMESO in the fall 2009.

■ PhD candidates

RAGNAR ANDERSSON is a PhD candidate at the Department for Studies of Social Change and Culture at LiU, and at REMESO. He investigates how regional development policies interact with integration of migrants policies. He is a member of the European Social Fund's Thematic Group on Inclusion (TIA).

CATARINA LUNDQVIST was a PhD candidate at REMESO. She received her PhD degree in May 2010. She has studied career-choices among youths with an immigrant background. She analyses questions of exclusion and inclusion, forms of social and cultural capital and the relevance of understanding career-paths in a transnational perspective.

ELEONORA NARVSELIUS received her PhD in 2009. Her PhD project dealt with socio-cultural reproduction and transformation of cultural authority in a post-Soviet context – *L'viv* in Ukraine.

MARTIN QVIST is a PhD candidate at REMESO. His dissertation project focuses on issues of governance and coordination in the area of integration policy, refugee reception and introduction programmes.

HENNING SÜSSNER is a PhD candidate at REMESO. He is an historian with a research interest in the contemporary studies of Central- and Eastern Europe. He is working on the dissertation 'Politics of Memory'.

CAROLINE TOVATT is a PhD candidate at REMESO. The aim of her dissertation project is to examine the significance of social networks for women and men with Swedish or immigrant background. She examines how persons involved in informal recruitment processes reflects, acts and develop strategies, with focus on ethnicity, gender and class.

■ PhD candidates within the REMESO–IMER collaboration, Malmö University

INGE DAHLSTEDT is a PhD candidate at REMESO/IMER, Malmö University. He is studying the role of formal education for ensuring a place on the labour market for natives and immigrants.

JENNY KIISKINEN is a PhD candidate at REMESO/IMER, Malmö University. She studies (with Saveljeff) how established parties

strategically handle the presence of the radical right-wing populist party the Sweden Democrats. She defended her thesis in May 2010.

SAYAKA OSANAMI is a PhD candidate at REMESO/IMER, Malmö University. She is working on a PhD project that studies attitudes towards interracial marriage among Swedes in Malmö.

SIGRID SAVELJEFF is a PhD candidate at REMESO/IMER, Malmö University. She studies (with Kiiskinen) how established parties strategically handle the presence of the radical right-wing populist party the Sweden Democrats. She defended her thesis in May 2010.

BRIGITTE SUTER is a PhD candidate at REMESO/IMER, Malmö University. She is working on a thesis that studies the impact of social capital and social networks in survival strategies of African migrants.

MOZHGAN ZACHRISON is a researcher at REMESO/IMER, Malmö University. Her research deals with influences at individual and institutional level on second language learning and communicative competence in a migration context.





RESEARCH

REMESO adopts a multileveled approach to the understanding of migration, ethnicity and society on a local, national, regional, as well as, a global level. Migration is related to individual experiences, changes in working life as well as to the national and global restructuring of the migratory landscape and the labour market, with changing frameworks for citizenship and welfare.

Individual projects study policies and practices of governments, public agencies, non governmental organisations, firms and trade unions, in terms of their consequences for labour migrants, asylum seekers and ethnic minorities.

A major part of REMESO's current research takes place within the long-term programme Migration, Labour Market Restructuring, and Social Inclusion with basic funding from the *Swedish Council for Work and Social Science (FAS)*. The programme is divided into three connected sub-programs, focusing respectively on 'regimes,' 'norms' and 'strategies':

- 1. International Migration, Changing Welfare Regimes and the Political Economy of Ethnic Labour Market Segmentation**
- 2. Ethnic Divisions, Social Exclusion/Inclusion and the Reconstitution of Normative and Legal Frameworks**
- 3. Post-national Strategies for Growth, Inclusion and Diversity**

The Institute is also conducting other research projects, linking migration and ethnicity to multiculturalism and politics of belonging, to colonial and post-colonial historical developments, to issues of health migration and social stratification. The Institute develops both quantitative and qualitative databases in collaboration with Swedish and International partners.

- 4. Studies on Health, Migration and Ethnic Relations**
- 5. Studies on Migration, Citizenship and Politics of Belonging**
- 6. Databases and Surveys**

Below follows a description of these research programs and the separate projects within them.



1. International Migration, Changing Welfare Regimes and the Political Economy of Ethnic Labour Market Segmentation

After the international industrial crisis of the mid-1970s, a politics of economic globalisation has spurred the mobility of capital and a deregulation of markets and trade. This has produced new international divisions of labour and recast relations between financial and productive capital, with a development from mass production and consumption towards flexible specialisation, downsizing and outsourcing, in public as well as private sectors. This has had deep impact on international migration and the transformation of welfare states.

In sum, the sub programme relates the political economy of international migration and changing ethnic relations to the study of changing welfare regimes, labour market regulation and changing working conditions, as well as to the incremental influence of supra-national frameworks of governance in the EU and other regional formations.

Projects

■ Informalisation of economy, re-commodification of labour and migration

The aim of this project is to pursue empirical research on informal economy and to critically review the concept and its relation to structural changes of the labour market, and migration. The floating borderline between formal and informal economy will be highlighted.

The project contains three part studies.

- 1) Ethnic Segmentation and Deregulation of the Taxi Business
- 2) Subcontracting in Automobile Industry
- 3) Building Industry.

Project director: Zoran Slavnic

Financing: FAS/LiU

■ Reorganisation of the public sector: changing gender and ethnic relations

The aim of this project is to describe and analyse the reorganisation of the Swedish public sector from an ethnic and gender perspective. In focus are local interpretations of the international 'New Public Management' concept which allegedly promise more democracy and freedom of choice for the citizens, lower costs for the local community and development of new markets for local industry and commerce. Different methods will be used to explore this: data from Statistics Sweden and Louise-data, unpublished written material and interviews with relevant actors.

Project director: Elisabeth Sundin, IEI.

Other participants: Malin Tillmar, IEI.

Scientific partners: Anne Kovalainen, Åbo University, Finland, Elisabet Ljunggren, Bodö University, Norway; Director Monika Goldmann, Dortmunder Sozialforschungsinstitut, Germany.

Financing: HELIX-project (LiU), Vinnova and FAS/LiU.

■ Social networks and institutional discrimination – a comparative study of recruitment in large organisations

This project explores the importance of recruitment practices and different access to social networks in explaining the substantial differences in unemployment and occupational rates between ‘Swedes’ and people with foreign background. The project raises two perspectives related to durable inequality: theories around social capital and institutional selection. Methods are both quantitative and qualitative, with surveys and in-depth interviews.

Project Director: Carl-Ulrik Schierup

Project coordinator: Anders Neergaard

Other participants: Alireza Behtoui

Financing: FAS/LiU

■ Ethnicity gender and social networks in informal recruitment processes

This project focuses on social networks, especially the importance of interpersonal relations in work recruitment. It studies the role of ethnicity, gender and class in informal recruitment processes. Empirical material is collected through three sub-studies, analysing the relationship between qualifications and employment. Methods to be used are semi-structured interviews combined with ‘ego network mapping’.

Project Director: Aleksandra Ålund

Project coordinator: Anders Neergaard

Project participants: Paula Mulinari and Caroline Tovatt

Financing: FAS/LiU

■ Social stratification and polarisation

The starting point of this project is the economic restructuring towards a post-Fordist economy and transformations in cities with regard to economic, geographic and social polarisation. The study uses the REMESO databases to describe trends of polarisation and emergence of ethnic hierarchies in Stockholm, and Sweden.

Project director: Susanne Urban

Financing: FAS/LiU

■ Competence and contacts. The relevance of different types of social relations for establishment in the labour market for young persons with immigrant background

Opportunities in the labour market are to a large extent determined by formal and informal competence and contact networks of the individual, as well as by economic and social context-factors. An important aspect concerns the development over time; how increased polarisation of the housing market and structural and cyclical changes in the labour market have affected the opportunities of young persons of immigrant backgrounds.

Project director: Martin Klinthäll

Other participants: Susanne Urban

Scientific partners at other universities/centres: Centre for Economic Demography, Lund university

Financing: FAS/LiU

■ Career choices for young people with immigrant background – transitions, strategies and orientations in education and work

This project focuses on career-choices of youth with immigrant background, with special emphasis on questions of exclusion and inclusion, forms of social and cultural capital and the relevance of understanding career-paths in a transnational perspective. Interviews with youth in upper secondary school, and teachers, are conducted with participant observations during on year in the school.

Project director: Catarina Lundqvist (PhD cand.)

Other participants: Aleksandra Ålund, Erik Olsson, CEIFO, Stockholm, (advisors)

Financing: FAS/LiU

COMPLETED

■ From school to work and the impact of social capital

The aim of this project is to examine the impact of social capital on labour market out-

comes of young people in obtaining their first jobs, and any differences between young natives and children of immigrants in regard to their access to and return from social capital when they get their first employment

Project director: Alireza Behtoui

Financing: FAS/LiU

■ SOCTIES – Social ties and the integration of youth of immigrant background in Northern European labour markets

The project aims at investigating the impact of different kinds of social ties in the occupational attainment of young people of immigrant backgrounds. This will be compared across gender and different migrant and ethnic minority backgrounds including equivalent groups in the majority population. The crucial feature of this project is to develop a survey and collaboration between several countries.

Project director: Susanne Urban

Other participants: Alireza Behtoui and Martin Klinthäll

Financing: FAS/LiU



2. Ethnic Divisions, Social Exclusion/ Inclusion and the Reconstitution of Normative and Legal Frameworks

Although migration is a highly politicised global issue, a coherent international migration regime is still missing. While the world's most economically advanced countries, and the EU, introduce stricter border controls, increasing inflows of irregular migrants are allowed from less developed to more developed countries to work under informal conditions.

There have been several normative responses to this global development: the UN initiative for 'fair globalisation' centred on the ILO 'decent work agenda'. In the European context, migration has instigated processes of reshaping existing social models and action against discrimination. Also of importance are initiatives from NGOs, trade unions and international networks for migrants' rights.

The programme analyses the ongoing articulation of international migration regimes, integration policy and their normative dimensions. The 'regulatory dimension' is scrutinized both at the formal legal level and in respect to the previously dominant voluntaristic institutional framework of industrial relations, as in the Swedish model now undergoing significant change.

Projects

■ Norms in national immigration policies: Sweden in a comparative perspective

This project asks why Sweden has a comparatively open immigration policy. An important aim is to see if the relative Swedish openness is connected to differing interpretations of international norms. Important will also be to identify the limits of Swedish openness and to

see if they coincide with the limits of international norms, especially in the case of irregular migration. The method used is analysis of official documents and interviews. context.

Project director: Rune Johansson

Financing: FAS/LiU

■ Migration, citizenship and the 'modernization' of the European Social Model

A marked convergence of EU migration policy harmonization and policy to harmonize the socio-economic governance of the EU has emerged in the recent decade. The successful management of this convergence is said to constitute the very linchpin on which the EU's future global competitiveness and sustained social cohesion need to rest. The project pitches its analysis and empirical investigation at two interrelated levels: (1) as conflicts and contradictions play out between national and supranational levels; and (2) as they play out within supranational policy itself.

Project director: Peo Hansen

Scientific partners at other universities: Sandy Hager, York University, Canada.

Financing: FAS/LiU

■ Norm building processes and forms of policy governance

This project aims to analyse empirically norm-building processes as a way of mainstreaming anti-discrimination legislation in employment and labour market policies on three interdependent policy levels (EU/EES, national, local). A comparative design will shed light on norm-building processes after the introduction of the EU anti-discrimination legislation.

Project director: Maritta Soininen

Financing: FAS/LiU

■ The quest for fair globalization and a ‘decent work agenda’

This project addresses national and regional migration policy measures and relates them to contemporary initiatives to bring global governance in line with international norms, such as human rights and labour rights, as well as fair rules for cross-border movement of people. With reference to the standards and claims of major international declarations the project will identify structural conditions, political and institutional obstacles and opportunities for implementation. Methods are document analysis and interviews with institutional actors, social partners and NGOs.

Project director: Branka Likić-Brborić

Other participants: Charles Woolfson, Annette Thörnquist, Jonas Malmberg.

Scientific partners: AREL, Uppsala University.

Financing: FAS/LiU

■ Trade unions, globalisation and transnational solidarity – research network

The aim of this project is to create and develop a network of researchers and intellectuals around issues of trade unions, globalisation and transnational solidarity. Special focus is placed on gender, ethnicity and class perspectives in relation to issues of transnational trade union solidarity. The empirical focus is placed on the Baltic Sea region, the European Union and Europe, as well as globally (North-South).

Project director: Anders Neergaard.

Other participants: Magnus Dahlstedt, Paula Mulinari, Carl-Ulrik Schierup, Aleksandra Ålund

Scientific partners at other universities/centres: Lars Hansson, Växjö University, Diana Mulinari, Lund University, Nora Räthzel, Umeå University, Jonas Sjölander,

Växjö University, Staffan Stranne, Blekinge Technical College, Aina Tollefsen, Umeå University, Erik Bengtsson, Gothenburg University, Anki Bengtsson, Stockholm University, Fredrik Håkansson, Växjö University, Ingemar Lindberg, Stockholm.

Financing: FAS/LiU

■ Labour inspection co-ordination in the fight against undeclared work in the EU, with a special emphasis on migrant labour.

This study aims to provide the European Commission with a feasibility study on establishing a European platform for cooperation between labour inspectorates, and other relevant monitoring and enforcement bodies, to prevent undeclared work in 27 EU member states arising from the cross-border movement of workers.

Project director: Charles Woolfson,

Scientific partners: Colin Williams, University of Sheffield, Piet Renooy, University of Amsterdam, Regioplan, Ruslan Stefanov, Centre for the Study of Democracy, Sofia, Bulgaria.

Financing: Employment, Social Affairs and Equal Opportunities DG.

■ The role of labour inspection in emerging occupational health and safety hazards in changing labour markets

This project undertakes a study to assess the impact of emerging trends and risks on labour inspection methodologies in occupational health and safety in the member states of the EU. *Inter alia* and of particular interest, is how these emerging trends and risks are shaped by changes in the labour market and employment relations and affect vulnerable groups such as migrants.

Project director: Charles Woolfson

Scientific partners: David Walters, Cardiff University, Kooperationstelle Hamburg, Mälardalen University, CIOP-PIB Institute of Labour Protection, Poland.

Financing: Employment, Social Affairs and Equal Opportunities DG.

■ East-West labour migration, industrial relations and labour standards in a Swedish-Baltic context

The project will examine changing migration patterns and impacts on industrial relations as part of a wider Nordic-Baltic regional migration cluster. The project has two interrelated points of departure, one Swedish, the other, the Baltic States and proposes a two-dimensional approach, simultaneously examining the drivers of emigration from the Baltic countries and the impacts of labour migration on Sweden.

Project director: Charles Woolfson

Scientific partners: Annette Thörnquist, Christer Thörnqvist, Jolanta Aidukaite, University of Vilnius.

Financing: Visby programme application February 2010.

■ The development of trade union responses to the economic crisis in the Baltic States

This project examines the role of trade unions in policy formation, advocacy and protection in the context of the three Baltic States of Estonia, Latvia and Lithuania in a protracted period of economic downturn. All Baltic States have been severely impacted by global economic crisis with Latvia most of all in the EU. The project looks at the longer term implications of these developments for social sustainability in a context of high outward migration.

Project director: Charles Woolfson

Other participants: Epp Kallaste, Center for Applied Social Research, Tallinn, Estonia, Janis Berzins, Riga Stradins University, Latvia.

Financing: LiU.



3. Post-National Strategies for Growth, Inclusion and Diversity

This sub-programme explores different aspects of post-national strategies of governance, understood as examples of ‘renewal strategies’ in European welfare policies or, put differently, as transition from a ‘Keynesian welfare National State’ model into a ‘post-national workfare regime’. This is marked by economic policies emphasizing socio-technical innovation, growth, entrepreneurship and international competitiveness through supply-side strategies rather than full employment and planning.

This also have an impact on integration and refugee policy. A preferred approach is that of collaboration in ‘partnership’ - an umbrella notion for a range of strategies of networked and deliberative governance aiming at cooperation between different actors, including public institutions, business, unions, NGOs and civil society.

Projects

■ Changing frameworks in school governance: partnership in theory and practice

This project studies partnerships in the context of schools as arenas for social inclusion. Empirically, the focus of the project is elementary schools as well as adult education. The project relates to changes in the wider framework of school governance in Sweden.

Project director: Magnus Dahlstedt
Other participants: Aleksandra Ålund
Financing: FAS/LiU

■ Active citizenship and democracy for the new millennium

The project analyses normative as well as substantial dimensions of the notion of ‘active citizenship’ in Swedish politics. In recent years, political parties from left to right have stressed that public policy needs to view the exercise of power as one based on ‘bottom-up’ rather than on ‘top-down’ strategies. This reflect a gradual shift towards an emphasis on individual agency and freedom vis-à-vis governmental control, endeavours to achieve equality and promotion of democratic participation. A particular focus is placed on the relationships between democratic participation and social citizenship in the multi-ethnic society.

Project director: Magnus Dahlstedt
Financing: FAS/LiU

■ Partnerships, anti-discrimination and the role of immigrant associations

The main objective of this project is to examine partnership between public, private and voluntary actors by studying an Anti-Discrimination Agency (ADA) in Stockholm, run by SIOS, The Cooperation Group for Ethnic Associations in Sweden. The project sets out from previous research indicating a need for a broader understanding of the role of immigrant associations for the development of alternative strategies in education and the labour market. Methods will be interviews as well as document analysis.

Project director: Magnus Dahlstedt
Other participants: Aleksandra Ålund
Financing: FAS/LiU

■ Place branding—a new form of urban and regional governance?

The project explores whether *place branding*—a commonly employed strategy for urban and regional growth and competitiveness—enhances or obstructs inclusion and diversity in urban and regional environments. Empirical studies will be carried out at the level of a neighbourhood, at the municipal level and at the regional level in the area around Norrköping. The methods employed will include semi-structured interviews, map-elicitation techniques and participant observation.

Project director: Josefina Syssner

Financing: FAS/LiU

■ Implementation of the Swedish policy goals of ‘integration of immigrants’

The objective of this project is to describe and analyse the government’s steering of the complex objective of Swedish integration policy in the area of regional development and to map out obstacles for such an implementation as well as the results of it. The methods will be interviews, participatory observation and document analysis.

Project director: Ragnar Andersson

Financing: FAS/LiU

■ Immigrant entrepreneurship

This project analyses the structure and dynamics of immigrant entrepreneurship locally, regionally and nationally. Conditions within and across branches are studied, as well as differences between ethnic groups regarding business structure, organisation, networks and socio-economic characteristics. The empirical base of the project is the register-based REMESO data base, interview material and a unique survey, which will be built up within REMESO.

Project director: Zoran Slavnic

Other participants: Martin Klinthäll PhD

Financing: FAS/LiU

■ Working conditions, opportunity structures, and welfare of immigrant entrepreneurs

This project aims at mapping immigrant entrepreneurs’ working conditions, opportunity structures and their role in subcontracting chains, connecting big and small businesses, and to relate this to the broader context of post-Fordist restructuring and related changes in the Swedish welfare regime. During the last decades we have witnessed increased interest in small businesses in Sweden.

As far as immigrants small businesses are concerned, they have been expected, besides reducing unemployment among immigrants, to contribute to the integration of immigrants in Sweden.

Project director: Zoran Slavnic

Financing: FAS/LiU

■ Ethnic entrepreneurship, diaspora communities and socioeconomic development in transnational perspective

The objective of this project is to map the structure of ethnic entrepreneurship in the region of Östergötland, the background characteristics of immigrant entrepreneurs, as well as differences between ethnic groups regarding business structure, demographic and socio-economic characteristics and participation in business networks. The empirical base of the project is the register-based REMESO data base together with a qualitative investigation of the networks of immigrant entrepreneurs.

Project director: Martin Klinthäll

Other participants: Elisabeth Sundin, Susanne Urban, Malin Tillmar.

Financing: Norrköping Municipality, Linköping Municipality, NuLink.

■ Refugees, the labour market and the welfare state

This PhD-project studies reciprocal and network based forms of governance in the area of integration policy, refugee dispersal and introduction programme implementation. The 'soft' policy measures applied in this policy area aims at a more coordinated refugee reception at the local level. The project focuses on how these governance efforts are conditioned and how policy outcomes are shaped by a highly institutionalized context for service provision and state–municipality relations in this policy area. The research draws on qualitative methods, mainly semi-structured interviews and document analysis, as well as case studies.

Project director: Martin Qvist

Other participants: Maritta Soininen (supervisor)

Financing: FAS/LiU



4. Studies on Health, Migration and Ethnic Relations

This programme centres on issues concerning migration, health and health care. With increasing globalization and international migration, issues of health and health care are becoming more and more important for both migration policy and public health. Migration has large implications for health and health care: migrants move from parts with different health conditions and migration as such often include psychological stress, in particular forced migration. In receiving countries, racialisation and social exclusion also have an impact on migrants' health, and health care systems reflect mainstream societies lack of knowledge around these issues and are thus poorly equipped to treat people of different migrant backgrounds.

Projects

■ **Sexual risk taking from an intersectional perspective: experiences and understandings among young people in Sweden**

This study explores, from an 'intersectional' perspective how intersections of 'race'/ethnicity, gender, sexuality and class shape young people's sexual practice in general and sexual risk taking in particular. The project consists of two subprojects: 1. Alcohol and Sexual Risk Taking Among Young People in Sweden: A Qualitative Study of Interpretations and Experiences of Safe and Unsafe Sexual Relations. 2. Sexual Risk Taking among Gay and Lesbian Youth in Sweden: Attitudes and Experiences from an Intersectional Perspective. A qualitative approach is adopted.

Project director: Anna Bredström

Scientific partners: Part of the network 'Critical Sexuality Studies', chair Prof. Nina Lykke, Linköping University.

Financing: Alcohol Research Council of the Swedish Alcohol Retailing Monopoly, the Swedish National Board of Health and Welfare and Stiftelsen Torstein Amundsons fond.

■ **Ethnicity and gender in primary health care: understanding, practice and consequences**

The project examines what role ethnicity and gender have in the treatment of women of migrant background in primary health care, and how this is reflected in the every day practice in three different institutions: a primary health care centre (vårdcentral); a youth clinic (ungdomsmottagning) and a maternity welfare clinic.

The project contains three sub-studies that examine three different empirical levels: policy and institutional level; implementation and every day practice; migrant women's experiences of treatment. The project applies a comparative approach towards different institutions as well as between the different empirical levels.

Project director: Sabine Gruber

Other participants: Anna Bredström

Financing: FAS

5. Studies on Migration, Citizenship and Politics of Belonging

This programme draws together projects that in various ways address the status, definitions and changing conditions for citizenship in relation to historical changes of politics, migration, welfare and democracy. The research projects in the programme is characterized by synthesizing strategies drawing on both, historical, political and sociological approaches to the study of migration and social change.

Projects

■ European integration and european colonialism: reconstructing a historical relation, deconstructing a current historiography

This project is a study of the relation between colonialism/decolonization and European integration. Four of the six states that signed the Rome Treaty in 1957 were colonial powers at the time. To varying degrees, they emphasized integration either as an instrument for maintaining colonial control or as a compensation for their demise as colonial powers. Our project will analyze how the colonial system and the process of decolonization influenced this early phase of EU integration and how this influence is perceived in the current historiography of the EU.

Project director: Peo Hansen

Other participants: Stefan Jonsson

Financing: Swedish Research Council (Humanities and social science).

■ Beyond multiculturalism

This project reviews the Swedish trajectory between a liberal multicultural agenda and policies of asylum and naturalisation

towards an alignment with currently rising identity politics, securitisation of integration policy and the institutionalisation of processes of 'circular migration' in the EU. The project explores, in international comparative perspective, the development of neo-liberal politics on economic growth and their relation to contemporary neo-conservative politics concerned with moral duty, cultural homogeneity and community cohesion. The project aims at the production of an edited volume with contributions from scholars in studies of multiculturalism, citizenship, and politics of belonging.

Project Directors: Carl-Ulrik Schierup and Aleksandra Ålund

■ Migration, citizenship, and social welfare: comparative perspectives

This project develops a synergetic merger between studies on welfare regimes and labour studies, on the one hand, and migration and ethnic studies on the other. The project has launched comparative analysis of ways in which immigration have been linked with changes in welfare states and citizenship since the end of the 1970s. The differentiation of populations on the basis of ethnicity, origins, legal status and access to substantial social citizenship has been crucial in the shift away from welfare universalism and social redistribution. The main comparative focus is transatlantic, comparing the impact of migration on welfare state transformation in the wider EU region with developments in the United States and NAFTA.

Scientifically responsible: Carl-Ulrik Schierup

Other participants: Stephen Castles, Oxford University

Financing: FAS/LiU



■ Swedish only? Nation, economy and multi-culture in the Swedish communal school

The official Swedish educational policy tends to stress multiculturalism. Yet, the position of Swedish as the language of the communal school system is strengthened. The project aims at analysing the relationship between majority language and minority languages in communal schools, pinpointing the interplay between official multiculturalism, on the one hand, and national and economic integration aims, on the other. The first study focus on the language debates. The second study will be based on interviews conducted with local headmasters and local politicians/civil servants.

Project director: Rune Johansson

Other participants: Tünde Puskás

Scientific partners at other universities/centres: The project participants take part in the European project Lacufission.

Financing: Swedish Research Council

■ Populism and potential challenges for European integration and citizenship: a gender/'race'/ethnicity analysis (pending application)

This project, part of a wider programme, aims at an understanding of the populist experience (institutionalized parties, movements, political action, political communication, leaders, militants, voting behaviour) in the EU Member States. By looking at the legacies of the past, and through a comparison between newer EU Member States and older Member States, the proposal will investigate the emergence and spread of various forms of populism which, depending on the national context, may make reference to various authoritarian and totalitarian legacies. The project will focus on issues of gender and 'race'/ethnicity, to analyse how populist actions promote exclusionary practices through the construction of 'otherness' and a 'culture of domination'.

Programme director: Giovanna Campani
(Università degli Studi di Firenze, Italy)

Project director: Anders Neergaard

Other participants: Diana Mulinari,
Lund University, PhD to be recruited

Financing: European Union FP7 application
2011–2015

■ The nation's brightest and noblest: narrative identity and empowering accounts of the ukrainian intelligentsia

This completed PhD-project brings into focus the issue of reproduction and transformation of cultural authority in a post-Soviet context. The dissertation – *The Nation's Brightest and Noblest: Narrative Identity and Empowering Accounts of the Ukrainian Intelligentsia in Post-1991 L'viv* – seeks to examine how intelligentsia may be presented and what empowering narratives it may articulate in a concrete locality, namely, in the post-1991 West Ukrainian city of L'viv.

Project director: Eleonora Narvselius

Financing: FAS/LiU

COMPLETED

■ Diaspora formation and transnational relations among Kurds in France and Sweden

This is a completed PhD project *From Victim Diaspora to Transborder Citizenship? Diaspora Formation and Transnational Relations among Kurds in France and Sweden*. The study is a comparative exploration of identity among Kurds in the Marseille region in France and the Stockholm region in Sweden. The study argues that the Kurds in France maintain a tangible victim diaspora discourse and limited practice of transborder citizenship, whereas the Kurds in Sweden are socially and politically more diversified as they live in the more favourable Swedish political environment.

Project director: Khalid Khayati

Financing: FAS/LiU

COMPLETED

■ Narratives of belonging, homeland and nationhood in territorial and non-territorial minority settings

This PhD project is a study which explores what happens with ethnic and national identifications built on the same ethnocultural grounds, but under different socio-economic circumstances, i.e. whether the ethnic and national identification and articulation processes of Hungarians in Slovakia and Hungarians in Sweden constitute different types. The study is completed and published: *'We belong to them' – Narratives of Belonging, Homeland and Nationhood in Territorial and Non-territorial Minority Settings*. Brussels: Peter Lang, 2009.

Project director: Tünde Puskás

Financing: FAS/LiU

6. Databases and Surveys

REMESO develops a multiple strategy in the context of a cross disciplinary and transnational research agenda. Development of a register based database, survey as well as an electronic qualitative database provides basic empirical foundation for several research projects.

Projects

■ Register-based databases

This project is aimed at updating and handling the REMESO database, providing a general view of databases that is publicly accessible and enhances collaboration with other research groups. Detailed data for analysis of labour market transformation and welfare, including data on regions, local communities and different minority and ethnic minority groups are provided by a continuously updated and developed version of the large longitudinal register-based Swedish database. The REMESO database is based on LISA provided by Statistics Sweden, complemented with e.g. geographic information and marks.

Project director: Susanne Urban

Other participants: Martin Klinthäll, Alireza Behtoui

Financing: FAS/LiU

■ REMESO CSN survey – Capital, strategies and networks for labour market careers among younger people of immigrant background

Several projects in the REMESO research agenda motivate the development of a REMESO survey, building a data-base with focus on young people with immigrant background. The aim is to enhance long-term analyses on the role of social capital in ethnically segmented labour markets and welfare

state. The survey will meet the need for better structured data and samples large enough to enable studies of an ethnically differentiated society, accounting also for transnational networks.

Project director: Susanne Urban

Other participants: Martin Klinthäll, Alireza Behtoui

Financing: FAS/LiU

■ International cooperation for building an electronic qualitative database

In addition to register and survey-based databases an electronic qualitative database will be developed and maintained by REMESO. In order to meet international technical and administrative standards and to facilitate European research exchange and comparison, the database will be developed in cooperation with colleagues at the Wolfgang Goethe University of Frankfurt that manage a comparative European database, founded on qualitative research on ethnicity, gender and employment in transgenerational perspective, to which scholars at REMESO has contributed. The database will cover qualitative material from interviews, observations, memos, etc in studies on migration, integration, ethnicity, refugees, immigrants' experiences, attitudes toward immigrants and discrimination.

Project director: Zoran Slavnic

Scientific partners: Ursula Apitzch Wolfgang Goethe University of Frankfurt.

Financing: FAS/LiU





RESEARCH COMMUNICATION AND DISSEMINATION

Publications

Each year REMESO members of the staff publish a number of books, articles and reports. The main body of publications is found in established peer reviewed forums for research outputs, in academic journals and research publications, however, REMESO's researchers are also actively disseminating its output stakeholders in the wider community.

In 2009 three seminal books that were out of print was made available through LiU Electronic Press: Carl-Ulrik Schierup and Aleksandra Ålund *Paradoxes of Multiculturalism: Essays on Swedish society and Will They Still be Dancing?: Integration and Ethnic Transformation Among Yugoslav Immigrants in Scandinavia*. Also re published is Carl-Ulrik Schierup's *På kulturens slagmark: Mindretal og størretal taler om Danmark* about the background and early signs of the Danish anti-immigrant wave in media, culture and politics. These books can now be down loaded without charge at LiU E-press.

REMESO is also managing a Working paper series: *TheMES – Themes on Migration and Ethnic Studies*. Editors are Erik Berggren and Peo Hansen. Access TheMes web page for downloading through <http://www.isv.liu.se/remeso/themes?l=en>.

Articles in scientific journals 2009

ALIREZA BEHTOUI

- (accepted) 'Marriage Patterns of Immigrants in Sweden'. *Journal of Comparative Family Studies*.
- and Neergaard, Anders (2009) 'Perception of discrimination in recruitment and place of work', *Journal of immigrant and refugee studies*, vol. 4, pp.

ANNA BREDSTRÖM

- (2009) 'Sweden: HIV/AIDS Policy and the 'Crisis' of Multiculturalism', *Race and Class*, Vol 50, No. 4:57–74.

MAGNUS DAHLSTEDT

- (2009) 'Governing by Partnerships: Dilemmas in Swedish Education Policy at the Turn of the Millennium', *Journal of Education Policy*, 24 [6]; 787–801.
- (2009) 'Democratic Governmentality: National Imaginations, Popular Movements and Governing the Citizen', *Journal for Critical Education Policy Studies*, 7 [2]; 369–394.
- (2009) 'Parental Governmentality: Involving 'Immigrant Parents' in Swedish Schools', *British Journal of Sociology of Education*, 30 [2]; 193–205.
- (2009) 'The Partnering Society: Governmentality, Partnerships and Active Local Citizenship', *The Open Urban Studies Journal* [2]; 18–27.
- (2009) 'Arbete, rätt eller plikt?', *Socialvetenskaplig Tidskrift*, 16 [1]; 84–91.
- (2009) 'Det lärande samhället': Lärarutbildning, lärar- och lärandeideal kring millenniet', *Krut*, 135 [3].
- & Tesfahuney, Mekonnen (2009) 'Panglossia', *Tidskrift för Politisk Filosofi*, [2]; 6–23.
- & Nordvall, Henrik (2009) 'Folkbildning i (av)koloniseringens skugga: Demokrati, nationella mytologier och solidaritetens paradoxer', *Utbildning & Demokrati*, 18 [3] in press.

PEO HANSEN

- (2009) 'Post-national Europe, without cosmopolitan guarantees', *Race & Class: A Journal on Racism, Empire and Globalization*, Vol. 50, No. 4.
- 'More Barbwire or More Immigration... or Both? EU Migration Policy in the Nexus of Securitized Border Management and Neoliberal Economic Growth', *The Whitehead Journal of Diplomacy and International Relations*, Vol. 11, No. 1 (forthcoming).

- and Stefan Jonsson (2009) 'Bringing Africa as a 'Dowry To Europe': European Integration and the Eurafrican Project, 1920–1960', submitted to *Interventions: International Journal of Postcolonial Studies*.

STEFAN JONSSON

- (2009) 'The Ideology of Universalism; or, Lenin Exterminating Mosquitoes'. [Forthcoming in] *New Left Review* 2009.
- and Peo Hansen (2009) 'Bringing Africa as a 'Dowry To Europe': European Integration and the Eurafrican Project, 1920–1960', submitted to *Interventions: International Journal of Postcolonial Studies*.

MARTIN KLINTHÄLL

- (accepted) 'Immigration, Integration and Return Migration: The Swedish Experience' in *Population Bulletin of the United Nations*.

ANDERS NEERGAARD

- Behtoui, A. and - (2009). Perception of discrimination in recruitment and place of work. *Journal of immigrant and refugee studies*, 7, 1–23.

CARL-ULRIK SCHIERUP

- and Dahlstedt, Magnus (under review) 'Beyond the Swedish Model? Citizenship, Work and Education in Transition', submitted to *Critical Sociology*.

ZORAN SLAVNIC

- and Susanne Urban (2009) 'Socio-economic trends in the Swedish taxi sector—Deregulation, re-commodification, ethnification' *International journal on multicultural societies*, Vol 10(2008): p. 76–94.
- (2010), 'Political economy of informalisation', *European Societies* 12 (1):1–21.
- (2010), 'Struggle for survival in the deregulated market: Re-commodification and Informalisation of the taxi sector in Stockholm, forthcoming in ', *Forum for Social Economics*.

MARITTA SOININEN

- (in review) 'How democratic can it be—is deliberative policy-making good for minorities? The case of partnership governance in implementing EU anti-discrimination legislation', submitted to *Public Administration*.

JOSEFINA SYSSNER

- (2010) 'Place Branding in a Multi Level Perspective', *Journal of Place Branding and Public Diplomacy*.
- (2009) 'Conceptualisations of Culture and Identity in Regional Development Policy', in *Journal of Regional and Federal Studies*.19:3, pp. 437–458.
- (forthcoming 2011) 'Conceptualisations of Citizenship in a functional Region', *Journal of Citizenship Studies*.

SUSANNE URBAN

- 2009), 'Is the neighborhood-effect an economic or an immigrant issue? A study of the importance of the childhood-neighborhood for future integration at labour market'. *Urban studies* 46:3, pp.583–604.
- (2009) 'Critical remarks and empirical 'proof' of the imagined dark side of the city' Neergaard, Anders (red) *European perspectives on exclusion and subordination*. Maastricht: Shaker.

CHARLES WOOLFSON

- (forthcoming 2010) 'The sense of measure and societies 'without limit': a response to Alain Supiot', *Social & Legal Studies* 19(1).
- (forthcoming 2010) "'Hard times' in Lithuania: Crisis and 'discourses of discontent' in post-communist society', *Ethnography* 11.
- (forthcoming 2010) 'The Race Equality Directive: 'Differential' or 'differentiated' Europeanisation in the new EU member states? *European Societies* 12.
- (forthcoming 2010) and Sommers, J. and Thörnqvist, C. 'Labour Migration and the future of European labour standards after Laval', *Industrial Relations Journal* 41.
- (2009), 'Labour Migration, Neo-liberalism and Ethno-politics in the New Europe: The Case of Latvia', *Antipode: A journal of radical geography* 41(5): 952–82.
- and Kallaste, E. (2009) 'The Paradox of Post-Communist Trade Unionism: 'You can't want what you can't imagine'', *Economic and Labour Relations Review* 20th Anniversary Issue 20(1): 93–110.

ALEKSANDRA ÅLUND

- Ålund, A (tillsammans med M. Dahlstedt och Anna Ålund) (2009) 'Villkorad samverkan: Demokrati, och social inkludering i relationer mellan bildningsförbund och invandrarföreningar', accepted for resubmission i *Dansk Sociologij*.

■ Books and book chapters 2009

ALIREZA BEHTOUI

- (2009) 'Social capital and Stigmatised Immigrants' in A. Neergaard (Ed) *European Perspectives on Exclusion and Subordination The Political Economy of Migration*, Maastricht: Shaker. p. 232–237.

ANNA BREDSTRÖM

- (forthcoming, 2009) 'Åk inte dit! Exotiska platser och förföriska andra i svensk hiv/aids-policy?' in Jansson, M., Wendt, M., and Åse, C. (eds), *Den nationella väven? Feministiska analyser*, Lund: Studentlitteratur.

MAGNUS DAHLSTEDT

- (2009) *Aktiveringens politik: Demokrati och medborgarskap för ett nytt millennium*, Malmö: Liber.
- (2009) 'The Will to Activate: Employability, Social Exclusion and Labour Market Policies in Sweden', in: Neergaard, Anders (ed.) *European Perspectives on Exclusion and Subordination: The Political Economy of Migration*, Maastricht: Shaker.
- (2009) 'Det svårfångade 'kulturmötet': Mångfald och skillnadsskapande inom den entreprenöriella akademien', in: Edvardsson Stiwne, Elinor (ed.) *Ett år med Bologna – vad har hänt vid LiU?*, Centrum för undervisning och lärande, Linköpings universitet.
- (2009) 'Coaching som bekännelse? Föräldracoaching och fostran av neoliberala medborgare' in Nyblom, A. (ed.) *Kultur ~ natur: Konferens för kulturstudier i Sverige*, 15–17/6 Linköping: Linköping Electronic Press.

- (2009) 'Skriv historia med oss': Ungdomar, urbana konfliktlinjer och kampen om förorten', in: Graninger, Göran & Knuthammar, Christer (eds) *Samhällsbyggande och integration*, Linköping University Electronic Press.
- (2009) 'På tvären – IMER i brytningstider', in: Olsson, Erik & Rabo, Annika (eds) *Vem älskar imerforskning? En jubileumsskrift för CEIFO 2009*, Centrum för forskning om internationell migration och etniska relationer, Stockholms universitet.

BJÖRN FRYKLUND

- & Lundberg, Anna (2009), 'Asylsökande till Sverige, Ett rättssäkert och värdigt mottagande av barn och vuxna' in *Current Themes in IMER Research*, No 9, Malmö University.

PEO HANSEN

- (forthcoming 2010) and Hager, Sandy B. *The Politics of European Citizenship: Deepening Contradictions in Social Rights and Migration Policy*, New York and Oxford: Berghahn Books.
- (2009) 'The Parrot's Alive: EU Referenda and the Politics of European Citizenship', in Neergaard, Anders (ed.), *European Perspectives on Exclusion and Subordination: The Political Economy of Migration*, Maastricht: Shaker Publishing.
- (2009) 'Det kosmopolitiska löftet: Har 'mer Europa' gett kosmopolitiskt och progressivt Europa?', in Boa Ruthström (ed.), *Spaning Europa: Arena Idés årsbok 2009*, Stockholm: Premiss förlag.
- (2009) 'EU Migration Policy and the Politics of European Citizenship: A Matter of Rights... in Retreat?', in Jana Lozanoska and Slavco Dimitrov (eds.), *Integrating Differences: Human Rights, Social Inclusion and Social Cohesion in the Balkans on its Road to the EU*, Skopje: Euro-Balkan Institute.

RUNE JOHANSSON

- (2009) 'Nationens manliga dådkraft'. Krig och fred I nationella föreställningar 1815–1945' in Jerneck, Magnus (ed). *Fred i realpolitikens skugga*.

- (2009) 'IMER i en återvändsgränd. Om kultur och kulturell rasism' in ed. Erik Olsson & Annika Rabo, (Eds), *Vem älskar imerforskning? En jubileumsskrift för CEIFO 2009*.

STEFAN JONSSON

- (2010) *Rapport från sopornas planet: Kritiska essäer*. Stockholm: Norstedts.

BRANKA LIKIĆ-BRBORIĆ

- (forthcoming 2010), 'EU Enlargement, East-West Migration and a 'Liberal Paradox': European Social Model and the Challenge of Global Financial Crisis' in Gabriella Lazaridis (ed.) *Security, Insecurity and Migration*, Farnham: Ashgate Publishing.
- (forthcoming 2010) 'Migration and asymmetric integration of ex-communist countries into the EU: The case of Bosnia-Herzegovina' in Raul Delgado Wise (ed.) *Los Desafíos del Desarrollo y la Migración / The Challenges of Development and Migration*, Libro de la RED Internacional de Migración y Desarrollo.
- (2009), 'Global Governance, EU Enlargement and Development: New Migration, Transnationalism and the Political Economy of Europeanization of Bosnia-Herzegovina' in Anders Neergaard (ed.) *European Perspectives on Exclusion and Subordination: A Political Economy of Migration*. Maastricht: Shaker Publishing.
- and Li Bennich-Björkman (2009) 'Slovenien: från nation till stat' in F. Björklund and J. Rodin (red.) *Det nya Östeuropa – stat och nation i förändring*, Lund: Studentlitteratur.

PAULA MULINARI

- & Selberg, Rebecca (forthcoming 2009) *Arbete i senkapitalismen – feministiska reflektioner*, Gleerups förlag.
- (forthcoming 2009) 'The divided workforce: gender, ethnicity and the service sector'. in Guy Baeten (ed) *Making Malmö: Plans and Places in a Divided City*.

ANDERS NEERGAARD

- (Ed.). (2009). *European perspectives on exclusion and subordination: A Political economy of migration*, Maastricht: Shaker.

- (2009). 'Racialisation in the Labour Market: In Search of a Theoretical Understanding,' in A. Neergaard (Ed.), *European Perspectives on Exclusion and Subordination: The Political Economy of Migration*, Maastricht Shaker Publishing.

TÜNDE PUSKÁS

- (2009) 'We belong to them': narratives of belonging, homeland and nationhood in territorial and non-territorial minority settings', Bruxelles : P.I.E. Peter Lang.

MIKAEL RUNDQVIST

- and Andersson, Ragnar (2009) 'Integration och mångfald i regionala projekt', i Svensson, L. m fl (eds), *Lärande utvärdering och följeforskning*, Studentlitteratur, Sweden. Lund.
- and Andersson, Ragnar, (2009) 'A capacity building evaluation of integration and diversity in regional projects' in Svensson L. et al (eds) *Learning through ongoing evaluation*, Studentlitteratur, Sweden. Lund.

CARL-ULRIK SCHIERUP

- and Stephen Castles (forthcoming 2009) 'International Migration and Ethnic Diversity in Changing North Atlantic Welfare States', to be published in *Handbook on Comparative Welfare States*, Oxford University Press
- and Stephen Castles (forthcoming 2009) 'Migration and welfare states', to be published as Ch. 8 in thematic issue on The International Political Economy of Migration, edited by Nicola Phillips, in *International Political Economy Yearbook*.

MARITTA SOININEN

- (2009) 'Mechanisms of Exclusion – Ethnicity and Representation in Sweden: Local Party Nominations', in (eds) Andreas M Wüst, Thomas Saalfeld, and Karen Bird. *Migration and Representation: Challenges to Political Parties in Liberal Democracies*, Routledge, 2009 (forthcoming).

ZORAN SLAVNIC

- (2009) 'Integration into the Vertical Mosaic: Reflections on the History of Integration Policy, IMER Research and Journalism in Sweden since the 1960s', in A. Neergaard (ed.), *European Perspectives on Exclusion and Subordination: The Political Economy of Migration*, Maastricht: Shaker Publishing.

JOSEFINA SYSSNER

- (2010) 'Platser, människor, visioner – om Vimmerby som kommun och besöksmål' i Johnsson, Leif (red.) *Samhällsutveckling och Kulturarv i Vimmerby kommun*, Lund: Nordic Academic Press.
- and Khayati, K. (forthcoming 2010) 'Veni, Vidi, Adios', in Tesfahuney, M. and Schough, K. (red.). *Det Globala Privilegiet*.

SUSANNE URBAN

- (2009) 'Grannskapet som planeringsenhet' Graninger, Göran & Knuthammar, Christer (eds) *Samhällsbyggande och integration: Frågor om assimilation, mångfald och boende*, Linköping: Linköping University Electronic Press.
- (2009) 'Critical remarks and empirical 'proof' of the imagined dark side of the city' i Neergaard, A. (red) *European perspectives on exclusion and subordination*. Maastricht: Shaker.

CHARLES WOOLFSON

- (2010 forthcoming) and Kallaste E. and Berzins, J. 'Industrial relations in the Baltic states: conflict and continuity?' in S. Contrepolis, V. Delteil, P. Dieuaid and S. Jefferys (eds) *Globalising Employment Relations? Multinational Corporations and Central and Eastern European transitions*, London: Palgrave McMillan.
- (2010 forthcoming) 'Latvia: Lacking in Competence?' in J. Winterton and L. Magnusson (eds) *Trade Union Strategies for Competence Development*, London: Routledge.
- (2009) *The Labour Theory of Culture: A Re-examination of Engels' Theory of Human Origins*, London: Routledge & Kegan Paul. (First edition 1982, re-issue Routledge).

- (2009) 'Where state power and opposition collide: Discourses of labor protest in a new market economy' in Michael Huspek (ed) *Oppositional Discourses and Democracies*, London: Routledge, pp.60–81.
- Calite, D. and Kallaste, E. (2009) 'Employee 'voice' and working environment in the New Member States: Translating policy into practice in the Baltic States', in D. Walters and T. Nichols (eds) *Workplace Health and Safety - International Perspectives on Worker Representation*, London: Palgrave/Macmillan, pp.134–153.

ALEKSANDRA ÅLUND

- (2009) 'After Tito – Vampires; Fragments from the field and work'. In Anders Neergaard (ed.) *European perspectives on exclusion and Subordination; The political economy of migration* Shaker publishing, Maastricht.p.p. 347–357.
- (2009) 'Kvinnor som nav i föreningsarbete: Socialt aktörskap i det multietniska Stockholm', in Graninger, Göran and Knuthammar, Christer (eds) *Samhällsbyggande och integration: Frågor om assimilation, mångfald och boende*, Linköping: Linköping University Electronic Press.
- (2009) 'Rötter, dörrar och broar: Betydelsen av Georg Simmel för samtida IMER forskning'. E. Olsson och Annika Rabo (red) *Vem älskar IMER forskning; En jubileumsskrift för CEIFO 2009*. Stockholms Universitet (p.p 7–12).
- (Forthcoming 2009, with C-U Schierup). *From paradoxes of multiculturalism to paradoxes of liberalism*, Conference paper. 'Nation-State, Immigration and Cultural pluralism' at International Conference. Moscow, 18–19 September 2009 Proceedings.

■ Reports and occasional papers 2009

ERIK BERGGREN

- (2009) 'Det populistiska tricket', *Framtider*, no 2.

MAGNUS DAHLSTEDT

- (2009) 'The Swedish Road to Democracy? Governmentality, Technologies of Citizenship and Popular Movements', *TheMES: Themes on Migration and Ethnic Studies*, 30/2009.
- (2009) 'Vem ska lära vem om demokrati?', *Invandrare & Minoriteter*, 36 [2]; 15–17.
- (2009) 'Politik som makeover', *Socialistisk Debatt*, [1/09]; 71–93.
- (2009) 'Diversity management på svenska', *Socialistisk Debatt*, [1/09]; 191–199.
- (2009) 'Framåt–bakåt–varåt?', *Socialvetenskaplig Tidskrift*, 16 [2]; 210–212.

SABINE GRUBER

- (2009) 'Skollan gör skillnad. Etnicitet och institutionell praktik', *Invandrare och Minoriteter*.
- (2009) 'Ingen harmlös skillnad' i *Pedagogiska Magasinet. Lärarförbundets tidskrift för utbildning, forskning och debatt*, 2.
- (2009) 'Mångkultutrelle temadagar blir ett spännande avbrott från den vanliga undervisningen'. i *KRUT (Kritisk utbildningstidskrift)* nr 136, 4.

PEO HANSEN

- (2009) 'Utan rättigheter? EU:s paradoxala migrationspolitik', *Framtider*, No. 1.
- (2009) 'Asylrätt och asylfel: EU-mötet skiljer mellan folk och folk', *Dagens Nyheter* (Kultur-Kritik), 17 juli.

MARTIN KLINTHÅLL

- (2009) 'Företagande bland personer med utländsk bakgrund i Linköpings kommun'. REMESO, Linköpings Universitet. Mimeo.

MIKAEL RUNDQVIST

- & Andersson, Ragnar (2008), 'Processstödande förstudie om integration och mångfald i regionala strukturfondsprojekt', rapport REMESO, Linköpings universitet, NUTEK.

MARITTA SOININEN

- (2009) 'Institutions Matter–Governance Makes Difference Making of Diversity and Antidiscrimination Policy–the Dutch and the UK Case' in *TheMES: Themes on Migration and Ethnic Studies*, 31.

JOSEFINA SYSSNER

- (2009) 'Vem får synas när platser marknadsförs?' *Invandrare och Minoriteter*, No1/09.
- (2009), 'Vem vill bli konsument?' i Åkesson, M. (ed.) *Northern Comfort*, Botkyrka: Labyrint Press.
- (2009), *Innovations in the Cultural Tourism Industry, The case of New Media Meeting*, FKD Report, Internal working paper. Stockholm: Nordregio/REKENE.
- (2009) *New Media: East Sweden*. TKD Report, Internal working paper. Stockholm: Nordregio/REKENE.

CHARLES WOOLFSON

- (2010 forthcoming) *The impact of the Racial Equality Directive: a survey of trade unions and employers in the Member States of the European Union: Lithuania*, EU Fundamental Rights Agency, Vienna.
- (2009) 'Running wild, running scared', *European Voice*, February 5.

ALEKSANDRA ÅLUND

- (2009) 'Segregationens makt'. *Invandrare & Minoriteter*, No 2/09: 95–12.

Articles in scientific journals 2008

ALIREZA BEHTOUI

- (2008) 'Informal Recruitment Methods and Disadvantages of Immigrants in the Swedish Labour Market', *Journal of ethnic and migration studies*, vol. 3, pp. 411–430.

MAGNUS DAHLSTEDT

- (2008) 'Now You See It, Now You Don't: Reconsidering the Problem of Representation', *Policy Studies*, 29 [2]; 233–248.
- (2008) 'Viljan att 'göra om sig': Terapeutiska tekniker, social och emotionell träning', *Locus*, 20 [3–4]; 50–64.
- (2008) 'The Politics of Activation: Technologies of Mobilizing 'Multiethnic Suburbs' in Sweden', *Alternatives: Global, Local, Political*, 33 [4]; 481–504.

- Ålund, Aleksandra & Ålund, Anna (2008) 'Unequal Partnership? Immigrant Associations' and Adult Education in Sweden', *International Journal of Sociology*, 38 [2]: 18–31.

BJÖRN FRYKLUND

- (2008) 'Piero Ignazi, Extreme Right Parties in Western Europe', in *English Acta Sociologica* no 2/2008 Oxford University Press, Paperback 2006 Series Comparative Politics.

PEO HANSEN

- (2008) 'Review of Banting, Keith and Will Kymlicka' (eds.) (2006) *Multiculturalism and The welfare State: Recognition and Redistribution in Contemporary Democracies*, Oxford: Oxford University Press. Acta Sociologica, Vol. 51, No. 4.

STEFAN JONSSON

- (2008) 'Museum, Market, or Métissage: Choices for National Policies of Arts and Culture in Times of Globalization'. *The Nordic Journal of Cultural Policy* 11:2: 151–158.

RUNE JOHANSSON

- (2008) 'Dubbel exil', i *Historisk Tidskrift*, 2008.
- (2008) 'Kluven vänskap. Konflikthantering och uppföstran till fred' i *Historisk Tidskrift*.
- (2008) 'Från judarnas Wagner till folkhemets Pergament. Den kulturella identifikationens dilemma', i *Historisk Tidskrift*.

MARTIN KLINTHÄLL

- (2008) 'Ethnic background, labor market attachment and severe morbidity: Hospitalization among immigrants in Sweden 1990–2001', in *Journal of International Migration and Integration*. 9 (1).

PAULA MULINARI

- and Selberg, Rebecca (2008) 'Exploatering pågår: intersektionella analyser av klass och arbete', i *Genusvetenskaplig tidskrift*.

ZORAN SLAVNIC

- (2008), 'Integration into Vertical Mosaic: Reflections on the History of Integration Policy, IMER Research and Journalism in Sweden since 1960s', *Migracijske i etnicke teme* 24 (4):371–388.

- (2008), 'Mataffär för entusiaster', *Invandrade & minoriteter* (4):17–20.
- and Urban, S. (2008), 'Socio-Economic Trends in the Swedish Taxi Sector—Deregulation, Recommodification, Ethnification' in *International Journal on Multicultural Societies (IJMS)* 10 (1):76–94.
- Urban, S., and - (2008), 'Etnisk märkning av taxibranschen', *Dansk Sociologi* 19(1):53–72.

SUSANNE URBAN

- and Zoran Slavnic (2008) 'Rekommodifieringen av taxibranschen—förändringen av ekonomiska förhållanden och etnisk sammansättning' *Dansk Sociologi* nr 1/19, 53–72.
- and Zoran Slavnic (2008) 'Etnisk märkning av taxibranschen', *Dansk Sociologi* 19 (1):53–72.

CHARLES WOOLFSON

- and Likić-Brborić, Branka (2008) 'Migrants and the unequal burdening of 'toxic' risk: Towards a new governance regime', *Debate: Journal of Contemporary Central and Eastern Europe* 16(3): 291–308.
- and Calite, D. and Kallaste, E. (2008) 'Employee 'voice' and working environment in post-communist New Member States: An empirical analysis of Estonia, Latvia and Lithuania', *Industrial Relations Journal* 39(4): 314–34.
- and Sommers, J. and Thörnqvist, C. (2008) 'Where next for European trade union rights?' *Construction Labour Research News* (3): 5–10.
- and Calite, D. (2008) 'Working Environment in the new EU Member State of Lithuania: Examining a 'worst case' example', *Policy and Practice in Health and Safety* 6(1): 3–29.
- and Calite, D. (2008) 'Darbo Aplinka ir Socialinis Dialogas Europos Sąjungos Naujojoje Valstybėje Lietuvoje' (Working Environment and Social Dialogue in the New EU Member State of Lithuania) *Pinigu Studijos* 12(2): 78–92. (*Monetary Studies*, Bank of Lithuania).

- and Sommers, J. (2008) 'Trajectories of Entropy and 'the Labour Question': The Political Economy of Post-communist Migration in the New Europe', *Debate: Journal of Contemporary Central and Eastern Europe* 16(1): 53–69.
- (2008) 'European Briefing: Social Dialogue and Life-long learning in the new EU member states: 'reform fit' in Latvia', *Journal of European Social Policy* 18(1): 79–87.

ALEKSANDRA ÅLUND

- and Dahlstedt, Magnus & Ålund, Anna (2008) 'Unequal Partnerships? 'Immigrant Associations' and Adult Education in Sweden', *International Journal of Sociology*, 38 [2]: 18–31.

Books and book chapters 2008

RAGNAR ANDERSSON

- (2008) 'Inclusion of Immigrants—Effects of Different Kinds of Partnerships', in Svensson, L., Nilsson, B. (eds), *Partnership—As a Strategy for Social Innovation and Sustainable Change*, Stockholm: Santérus Academic Press.
- (2008) *Implementering av integrationspolitik i den regionala utvecklingspolitiken, 1998–2004. Flernivåstyrning av komplexa mål i nätverk*, Licentiatavhandling, Linköpings universitet. Norrköping.

ANNA BREDSTRÖM

- (2008) *Safe Sex, Unsafe Identities: Intersections of 'Race', Gender and Sexuality in Swedish HIV/AIDS Policy*, Linköping: Linköpings Universitet, diss.

MAGNUS DAHLSTEDT

- 'På demokratins bakgård: Om 'invandrare', representation och politik', in: Darvishpour, Mehrdad & Westin, Charles (eds) *Migration och etnicitet*, Lund: Studentlitteratur.
- (2008) "Att ställa krav är att bry sig": Spekulativ politik och kravmärkningens grammatik', in: Tesfahuney, Mekonnen & Dahlstedt, Magnus (eds) *Den bästa av världar? Beträktelser över en postpolitisk samtid*, Stockholm: Tankekraft.

- (2008) "From Camel-Boy to MP": The Politics of Agency and Exclusion in Swedish Political Parties', in: Pojmann, Wendy (ed.) *Migration and Activism in Europe since 1945*, Basingstoke: Palgrave Macmillan.
- & Ålund, Aleksandra & Lundqvist, Catarina (2008) 'Utbildning, arbete och medborgarskap', in: *Resultatdialog 2008: Forskning inom utbildningsvetenskap*, Stockholm: Vetenskapsrådet.
- & Tesfahuney, Mekonnen [eds] (2008) *Den bästa av världar? Beträktelser över en postpolitisk samtid*, Stockholm: Tankekraft.
- & Tesfahuney, Mekonnen (2008) 'Tärningen är kastad! Entreprenörism, kasinosaamhället och postpolitikens moral', in: Tesfahuney, Mekonnen & Dahlstedt, Magnus (eds) *Den bästa av världar? Beträktelser över en postpolitisk samtid*, Stockholm: Tankekraft.
- & Tesfahuney, Mekonnen (2008) 'Maze of Camps: (Im)mobilities, Racism & Geographies of Exception', in: Holmgren Troy, Maria & Wennö, Elisabeth (eds) *Space, Haunting, Discourse*, London: Cambridge Scholars Press.

BJÖRN FRYKLUND

- (2008), 'Ett förändrat Sverige: Migrationen och dess konsekvenser'. (A Changed Sweden: Migration and its consequences) kapitel 14. i Li Bennich & Paula Blomqvist (Red), *Mellan Folkhem och Europa*, Liber förlag.

SABINE GRUBER

- (2008) *När skolan gör skillnad—skola, etnicitet och institutionell praktik*, Liber, Stockholm.

PEO HANSEN

- (2008) *EU:s migrationspolitik under 50 år: Ett integrerat perspektiv på en motsägelsefull utveckling*, Lund: Studentlitteratur.

STEFAN JONSSON

- (2008) *A Brief History of the Masses: Three Revolutions*. New York: Columbia University Press.

- (2008) 'Facts of Aesthetics and Fictions of Journalism. The Logic of the Media in the Age of Globalization'. In *The Green Room. Reconsidering the Documentary and Contemporary Art*, 1. Edited by Maria Lind and Hito Steyerl. Berlin: Sternberg Press / Annandale-on-Hudson, NY: Center for Curatorial Studies, Bard College, 166–187.
- (2008) 'The Ivory Towers in California'. In *Global Cities*. Arkitekturmuseet Yearbook 2007. Bilingual edition. Edited by Ana Betancour and Annelie Kurttila. Stockholm: Arkitekturmuseet, 5–18.
- (2008) 'Kartan över världens centrum. En essä'. *Ymer 128 Svenska Sällskapet för antropologi och geografi*, 51–72.

KHALID KHAYATI

- (2008) *From victim diaspora to transborder citizens? Diaspora formation and transnational relations among Kurds in France and Sweden*, PhD thesis, Linköping University.

ZORAN SLAVNIC

- (2008), 'Kamp på den avreglerade marknaden: Rekomodifiering och etnifiering av taxibranschen i Stockholm', in Håkan Forsell (ed.), *Den kalla och den varma staden. Migration och stadsförändring i Stockholm efter 1970*, Stockholm: Stockholmia Förlag.

MARITTA SOININEN

- (2008) 'Towards inclusive democracy, in The Recognition of the Right of Non-European Community Citizens to Suffrage', in *Local Elections in Europe*, (ed) David Moya, Pi I Sunyer Foundation and Institute of Public Law, University of Barcelona (forthcoming).

JOSEFINA SYSSNER

- (2008) 'Regionen och dess medborgare' i Anderson et al. (red) *Regionalpolitikens geografi – Regional Tillväxt i teori och praktik*, Lund: Studentlitteratur.

SUSANNE URBAN

- (2008) 'Etnisk boendesegregation – en korsningsfråga' in *Migration och etnicitet, perspektiv på ett mångkulturellt Sverige*, red Darvishpour, Merdad & Westin, Charles (red.), Stockholm: Studentlitteratur.

- (2008) 'Stockholms etniska delning – polarisering på arbets- och bostadsmarknaden' in Forsell Håkan (red.) *Den kalla och varma staden. Migration och stadsförändring i Stockholm efter 1970*. Stockholm: Stockholmia förlag.

■ Reports and occasional papers 2008

MAGNUS DAHLSTEDT

- (2008) 'Politik som makeover: Anteckningar om konsten att göra om sig och en samtida nyliberal hegemoni', *Socialistisk Debatt*, forthcoming.
- Aleksandra Ålund & Lundqvist, Catarina (2008) 'Utbildning, arbete och medborgarskap', in: *Resultatdialog 2008: Forskning inom utbildningsvetenskap*, Stockholm: Vetenskapsrådet.
- (2008) 'Inga afrikaner ska lära oss om demokrati: Aktivt medborgarskap, invandrarskap(ande) och villkorat deltagande', paper presented at *Bortom rösträtten*, June 12, Samtidshistoriska institutet, Södertörns högskola.
- (2008) 'Democratic (Govern)mentality: Movement Ideals and National Imaginations in Sweden', paper presented at *Irregular Migration, Informal Economy and Pathways to Decent Work in a Globalising Economy*, December 4–5, Istanbul.

STEFAN JONSSON

- (2008) 'Den första människan'. Anteckningar om Norden, litteraturen och kolonialismen'. *Ord & Bild*, nr. 2, 2008: 35–47.
- (2008) 'Problemet är inte rasism'. [En granskning av svensk integrationspolitik, del 1.] *Dagens Nyheter* 27 maj 2008.
- (2008) 'Blindhet över partigränserna'. [En granskning av svensk integrationspolitik, del 2.] *Dagens Nyheter* 28 maj 2008.

KHALID KHAYATI

- Regular contributor to *Kurdish Globe*.

MARTIN KLINTHÄLL

- (2008) *Kartläggning av invandrarföretagande i Norrköping och Linköping*. Mimeo.

- (2008) 'Flyktingskap och återvandring. Exilen som temporärt tillstånd'. *Lund Papers in Economic History*, No. 108.
- (2008) 'Tillfällig asyl försvårar integration'. *Invandrare & Minoriteter*. Nr. 2–3, maj.

PAULA MULINARI

- (2008) 'Kontroll och dominans', i *Invandrare och Minoriteter* 2008/2

MIKAEL RUNDQVIST

- and Andersson, Ragnar (2008), *Processstöd-jande förstudie om integration och mångfald i regionala strukturfondsprojekt*, rapport REMESO, Linköpings universitet, NUTEK.

ZORAN SLAVNIC

- (2008), 'Conflicts and Inter-Ethnic Solidarity: Integration Processes Among Immigrants from Former Yugoslavia', Paper read at *Understanding Conflicts – Cross-Cultural Perspectives*, at Århus University, Denmark, August 19–22, 2008.
- (2008), 'Forskning om invandres företagande – en litteraturoversikt', in Stockholm: NUTEK R 2008:08, 40.

JOSEFINA SYSSNER

- (2008) 'Finns det ett regionalt medborgarskap?' i *Gränsbrytning*.

CAROLINE TOVATT

- (2008) 'Arbetslivets osynliga dörrvakter' i *Invandrare & minoriteter*, 2008:2.
- and Hans Robertsson (2008) 'Det dubbla utanförskapet. Mångfald och sexuell läggning bland äldre'. *Socialstyrelsen*.

SUSANNE URBAN

- (2008) 'Polarisering i Stockholm – på gränsen till postfordism', Paper presented on *Sveriges Sociologförbunds årsmöteskonferens 2008* Mittuniversitetet Östersund 31 januari–1 februari.

MARTIN QVIST

- (2008) 'Samordnat mottagande? – Styrnings- och samordningsprocesser inom introduktion och flyktningmottagande'. *TheMES* No. 27/2008. REMESO, Linköpings universitet.

- (2008) 'Collaborative Efforts for Labour Market Integration? Implementation of Introduction Programmes in Sweden'. Paper presented at *XV NOPSA Conference*, Tromsø 2008.
- (2008) 'Managing Immigrant Integration in the Welfare State: Post-NPM Strategies, Past Reforms and the Institutionalized Context'. Paper presented at *ECPR Joint Sessions*, Rennes 2008.

CHARLES WOOLFSON

- and J. Sommers, (2008) 'Efter Laval: framtiden för europeiska arbetsvillkor', *Socialistisk Debatt* 1: 33–46.
- (2008) 'European perspectives on the labour migration from New Member States: The case of Latvia', *Bulletin of Association for the Study of the World Refugee Problem* 1, 46, 55. Hinweis zum 58. Internationalen Kongress der AWR, 2007, 1: 4–14.

ALEKSANDRA ÅLUND

- Magnus Dahlstedt & Lundqvist, Catarina (2008) 'Utbildning, arbete och medborgarskap', in *Resultatdialog 2008: Forskning inom utbildningsvetenskap*, Stockholm: Vetenskapsrådet.

Articles in scientific journals 2007

ALIREZA BEHTOUI

- (2007) 'The Distribution and Return of social capital: Evidens från Sweden.' in *European Societies* 9:383–407.

MAGNUS DAHLSTEDT

- (2007) 'Fostran till svenskhet? Om en mångtydig samverkan mellan skola och föräldrar', *Nordiske Udkast*, [2]; 16–39.
- (2007) 'I val(0)frihetens spår: Segregation, differentiering och två decennier av skolreformer', *Pedagogisk Forskning i Sverige*, 12 [1]; 20–38.
- (2007) 'Moralisk fostran i brist på reell demokrati', *Krut*, 126 [2]; 34–49.

STEFAN JONSSON

- (2007) 'Att färdas under dödens tecken.' [Review of Patricia Lorenzoni, *Att färdas under dödens tecken: Frazer, imperiet och den försvinnande vilden. Institutionen för idéhistoria och vetenskapsteori, Göteborgs universitet 2007.*] *Lýchnos. Annual of the Swedish History of Science Society*, 290–296.

MARTIN KLINTHÄLL

- (2007) 'Refugee Return Migration: Return migration from Sweden to Chile, Iran and Poland 1973–1996'. *Journal of Refugee Studies* 20 (3) 2007. Oxford: Oxford University Press.

ELEONORA NARVSELIUS

- (2007) 'Cultural Identifications, Political Representations and National Project(s) on the Symbolic Arena of the Orange Revolution', in *Studies in Ethnicity and Nationalism*, Vol.7, No.2, 2007, pp.29–55.

CHARLES WOOLFSON

- (2007) 'Pushing the envelope: The 'informalisation' of labour in post-communist new EU Member States' in *Work, Employment and Society* 21(3): 551–564.
- and Calite, D. (2007) 'New European Community strategy for health and safety: The elephant in the room' in *International Journal of Occupational and Environmental Health* 13(2): 343–357.
- (2007) 'Labour Standards and Labour Migration in the new Europe: Post-communist legacies and perspectives' in *European Journal of Industrial Relations* 13(2): 199–218.
- (2007) 'Darbo ormalumø nesilaikymas pokomunistinėse Europos Sąjungos naujosiose šalyse', *Pinigu Studijos* 11(1): 62–73. (*Monetary Studies*, Bank of Lithuania).

ALEKSANDRA ÅLUND

- (2007) 'Migration och socialt medborgarskap', *Nordisk Socialt Arbeid*, 27 [4]; 280–294.

Books and bookchapters 2007

ALIREZA BEHTOUI

- (2007) 'Segregerade nätverk: Vägen från skola till arbete' i Dahlstedt, Magnus, Fredrik Hertzberg, Susanne Urban, och Aleksandra Ålund 2007 (red) *Utbildning, arbete, medborgarskap*. Umeå: Borea.

ERIK BERGGREN

- (2007) 'Danish xenophobia–Power Logic in Motion' in Berggren, E, Likić-Brborić, B, Toksöz G and Trimikliniotis, N. (eds) 2007 *Irregular Migration, Informal Labour and Community: A Challenge for Europe*, Shaker Publishing, pp.372–390.
- (2007), Likić-Brborić, Branka, Toksöz G and Trimikliniotis, N. (Editors) *Irregular Migration, Informal Labour and Community: A Challenge for Europe*, Shaker Publishing.

MAGNUS DAHLSTEDT

- et al. [eds] (2007) *Utbildning, arbete, medborgarskap: Strategier för social inkludering i den mångkulturella staden*, Umeå: Borea.
- (2007) 'Föräldrar som villkorad resurs: Skolans föräldrasamarbete i mångkulturella förortsmiljöer', in: Dahlstedt, Magnus et al. (eds) *Utbildning, arbete, medborgarskap: Strategier för social inkludering i den mångkulturella staden*, Umeå: Borea.
- (2007) 'Inflytande och politisk jämlikhet', in: Hjerm, Mikael & Peterson, Abby (eds) *Etnicitet: Perspektiv på samhället*, Malmö: Gleerups.
- & Schierup, Carl-Ulrik (2007) 'Bortom den svenska modellen?', in: Dahlstedt, Magnus et al. (eds) *Utbildning, arbete, medborgarskap: Strategier för social inkludering i den mångkulturella staden*, Umeå: Borea.
- & Tesfahuney, Mekonnen (2007) 'Lägre politik: Undantagstillstånd, övervakningsansamlingar och migration', in: Lövgren, Sofia & Johansson, Kerstin (eds) *Viljan att styra: Individ, samhälle och välfärdens styrningspraktiker*, Lund: Studentlitteratur.

SABINE GRUBER

- (2007) *Skolan gör skillnad. Etnicitet och institutionell praktik*, diss. Tema Etnicitet Linköpings universitet

PEO HANSEN

- (2007) 'EU Migration Policy in the Post-Amsterdam Era: The Contradictions between Migrant 'Integration', Flexible Labour Immigration and Refugee Protection', in Berggren, E., Likic, B., Toksöz, G. and Trimikliniotis, N. (eds.), *Irregular Migration, Informal Labour and Community: A Challenge for Europe*, Maastricht: Shaker Verlag.

STEFAN JONSSON

- (2007) 'The Thinking Eye. On the Art of Sophie Tottie.' In Sophie Tottie. *Bilingual Edition*. Berlin: Hatje Cantz.
- (2007) 'Nathalie Sarrautes Planetarier. Ett förord' In Nathalie Sarraute, *Planetarier*. Translation by Eva Alexanderson. Stockholm: Modernista.
- (2007) 'Arens bildningsresa. Europeiska bildningsidéer och postkolonial teori.' In *Bildningens förvandlingar*. Edited by Bernt Gustavsson. Gothenburg: Daidalos, 2007: 287–310.

BRANKA LIKIĆ-BRBORIĆ

- (2007) 'Globalisation, EU Enlargement and New Migratory Landscapes: The Challenge of Informal Economy and Contingencies for Decent Work' in E. Berggren, B. Likic-Brboric, G. Toksöz and N. Trimikliniotis (eds.), *Irregular Migration, Informal Labour and Community: The Challenge for Europe*, Maastricht: Shaker Publishing.

CATARINA LUNDQVIST

- Ålund, Aleksandra (2007) 'Social exkludering och motstånd: utbildning och arbete i multietniska ungdomssammanhang' i Olofsson, Jonas & Thoursie, Anna (red.), *Ungas framtidsvägar. Möjligheter och utmaningar*. Agoras årsbok 2006. Stockholm: Agora.
- (2007) 'Arbetsplatsförlagd utbildning; välgledning och/eller sortering?' i: Dahlstedt, M. m.fl. (red.) *Utbildning, arbete, medborgarskap*, Umeå: Boréa.
- (2007) 'Transnationella horisonter i val av utbildning och karriär', i Olsson, Erik, Lundqvist, Catarina, Rabo, Annika, Åkesson, Lisa, Sawyer, Lena & Wahlbeck, Östen (red.), *Transnationella rum. Diaspora, migration och gränsöverskridande relationer*. Umeå: Boréa.

PAULA MULINARI

- (2007) *Maktens fantasier & servicearbetets praktik: arbetsvillkor inom hotell- och restaurangbranschen i Malmö och Linköping*. Tema Genus, Institutionen för Tema, Linköpings universitet.

ERIK OLSSON

- Lundqvist, C., Rabo, A., Åkesson, L., Sawyer, L. & Wahlbeck, Ö. (eds.) (2007), *Transnationella rum. Diaspora, migration och gränsöverskridande relationer*. Umeå: Boréa
- (2007) 'Ett begrepp på resa: om diaspora i forskningen', i Olsson, E, et.al (eds.), *Transnationella rum*, Umeå: Boréa.

TÜNDE PUSKÁS

- (2007) "Vi är, kommer att bli, eller har redan blivit sverigeungrare" Berättelser om en diasporisk gemenskap', i Olsson, Erik mfl (red.), *Transnationella rum och diasporiska gemenskaper*, Umeå: Borea.
- (2007) 'Theodor Kallifatides: Ett nytt land utanför mitt fönster ur språk och samhällsperspektiv', Göteborgs Universitet: *Rapporter Om Svenska som Andraspråk*.

CARL-ULRIK SCHIERUP

- and Dahlstedt, Magnus (2007) 'Bortom den svenska modellen?', in: Dahlstedt, Magnus et al. (eds) *Utbildning, arbete, medborgarskap: Strategier för social inkludering i den mångetniska staden*, Umeå: Boréa.
- and Urban, Susanne (2007) 'Social exkludering: ett beskuret medborgarskap' in *Utbildning, arbete, medborgarskap och agens*, Umeå: Borea.

ZORAN SLAVNIC

- (2007), 'Informalization of the Economy and the Recommodification of Labour', in E. Berggren, B. Likic-Brboric, G. Toksöz and N. Trimikliniotis (eds.), *Irregular Migration, Informal Labour and Community: A Challenge for Europe*, Maastricht: Shaker Publishing.

CAROLINE TOVATT

- (2007) 'Det sociala kapitalets betydelse för att få en plats på arbetsmarknaden', i Dahlstedt, Magnus et al. (eds) *Utbildning, arbete, medborgarskap: Strategier för social inkludering i den mångetniska staden*, Umeå: Boréa.

CHARLES WOOLFSON

- (2007) 'The Continuing Price of Britain's Oil: Business Organisation, Precarious Employment and Risk Transfer Mechanisms in the North Sea Petroleum Industry', in A. Brannigan and G. Pavlich (eds) *Governance and Regulation in Social Life: Essays in Honour of W. G. Carson*. London: Routledge, Cavendish, pp.55–74.
- (2007) 'The semiotics of working class speech' in Gray, A. Campbell, J. Erickson, M. Hanson, S. and Wood, H. (eds) *CCCS Selected Working Papers: Volume 1*, London: Routledge, pp. 504–535.

ALEKSANDRA ÅLUND

- Peterson, Abby (2007) 'Etniciteter: Ras, kön, klass, identitet och kultur', in: Peterson, Abby & Hjerm, Michael (eds) *Etnicitet: Perspektiv på samhället*, Glerups; Malmö.
- Peterson, Abby (2007) 'Ungdomar och identitet', in: Peterson, Abby & Hjerm, Michael (eds) *Etnicitet: Perspektiv på samhället*, Glerups; Malmö.
- Reichel, Isak (2007) 'Mellan marknad och volontär aktivism', in: Dahlstedt, Magnus et al. (eds) *Utbildning, arbete, medborgarskap: Strategier för social inkludering i den mångkulturella staden*, Umeå: Borea.
- Reichel, Isak (2007) 'Civic Agency, Market and Social Inclusion: The Emergence of Informal Economy in the Context of Swedish Associations Established on Ethnic Grounds', in: Berggren, Erik et al. (eds) *International Migration, Informal Labour and Community: A Challenge for Europe*, Shaker Publishing: Maastricht.
- 'Ungdom, social exkludering, kulturell agens', in: Burns, Tom R. et al. (eds) *Makt, kultur och kontroll över invandrades livsvillkor: Multidimensionella perspektiv på strukturell diskriminering i Sverige*, Uppsala: Acta Universitatis Upsaliensis.
- Dahlstedt, Magnus, Hertzberg, Fredrik och Urban, Susanne (red) *Utbildning, arbete och medborgarskap*. Umeå: Borea.
- Dahlstedt, Magnus, Hertzberg, Fredrik och Urban, Susanne (red) 'Introduktion'. I: *Utbildning, arbete och medborgarskap*. Umeå: Borea. (s.11–27)

■ Reports and occasional papers 2007

RAGNAR ANDERSSON

- (2007) *Facket i ett flerparts forskningspartnerskap. En förstudie kring HELIX VINN Excellence Centre, HELIX, Linköpings universitet*. Linköping.

ERIK BERGGREN

- (2007) 'Om vådan att förstöra det man befriar' *Arbetaren*, 9.
- (2007) 'Naiv journalistik' on Erik Fichteliu's work on former Prime minister Persson, *DN-kultur*, 27/3.
- (2007) 'Grattis Lasse. En verklig insats för konsten och Sverige' on Lars Vilks, *DN-kultur*, 21/9.

MAGNUS DAHLSTEDT

- (2007) 'Spekulationer kring en postpolitisk samtid', paper presented at *SWEPSA*, October 17–19, Norrköping.

BJÖRN FRYKLUND

- ,Kiiskinen, Jenny & Saveljeff, Sigrid, (2007) *Populism and a Mistrust of Foreigners. Sweden in Europe*. The Swedish Immigration Board, Sweden.
- ,Kiiskinen, Jenny & Saveljeff, Sigrid (2006/07), 'Demokratins akilleshäla', i *Invandrare & Minoriteter*, dec 2006 and jan 2007.

SABINE GRUBER

- (2007) *I skolans vilja att åtgärda 'hedersrelaterat' våld: etnicitet, kön och våld*, Rapport 2007:1. Centrum för kommunstrategiska studier (CKS), Linköpings universitet.

KHALID KHAYATI

- Regular contributor to *Kurdish Globe*.

MARTIN KLINTHÄLL

- (2007) 'Integration bidrar till hälsa'. *Tidskriften Valfärd* Nr.4, 2007. Statistics Sweden, December 2007
- (2007) 'Etnisk bakgrund, integration och sjuklighet' *Working Papers in Social Insurance*, No. 1 2007. Försäkringskassan.

ERIK OLSSON

- (2007) 'Invandrade minoriteter som diaspora', *Invandrare & Minoriteter* 1/2007.

MARTIN QVIST

- (2007) 'Integration och organisation: ett förvaltningspolitiskt perspektiv på mottagande och riktade åtgärder'. Paper presented at SWEPSA, Norrköping 2007.

ZORAN SLAVNIC

- (2007) 'En intervjustudie av fyra utlandsfödda företagare i Sverige', in, *Invandrades företagande. En studie av utlandsfödda företagare i Sverige*, Stockholm: NUTEK, R 2007:22, 5–32.
- (2007) 'Forskning och politik relaterat till småföretagande bland invandrare i Sverige', in, Rapport Nr: 2007:21, Linköping: Länsstyrelsen Östergötland.

JOSEFINA SYSSNER

- (2007) 'Definitions of Regionalism', presentation at *Nordic Geographers Meeting*, Bergen, Norway, June 2007.
- (2007) 'Top Down Regionalism?—Methodological implications in studies of regionalism', paper presented at 4th *ECPR General Conference*, Pisa, 2007.
- (2007), 'Regionalpolitiken är fantasilös och apolitisk' i *GP*, 2007-02-28.

CAROLINE TOVATT

- and Hans Robertsson (2007) *Lögnernas förbannelse eller mota Olle i grind—strategier hos homo- och bisexuella för att hantera diskriminering*. Stockholm: HomO.

SUSANNE URBAN

- (2007) 'Skilda världar i samma stad', i *Invandrare & minoriteter*, s. 10–14.

CHARLES WOOLFSON

- (2007) 'Is 'safety crime' real crime? The regulations and enforcement of health and safety Law in the Baltic States', in T. Davulis and D. Petrlylaite (eds) *Labour and Social Security Law in the XXI Century: Challenges and Perspectives*, The Material of the International Scientific Conference, 11–13 May 2006, Teisnes informacijos centras, Vilnius. pp. 341–367.

- and Calite, D. and Kallaste, E. (2007) 'Labour Conditions and Working Environment in the Post-Enlargement Baltic States: Problems and Prospects for Harmonization', plenary presentation published in *Acta Universitatis Latviensis* series of Economics of the Academic Papers of the University of Latvia., University for Latvia.
- (2007) 'The 'envelope scandal': A Lithuanian tale', *International Union Rights* 14(1):13–14.
- (2007) 'A closer look at the Baltic work environment' Special supplement on Human Resources in the Baltic States. *The Baltic Times* 10(542): 11.

Seminars

The seminar activities at REMESO are mainly working seminars, seminars open to graduate students and researchers at the Institute and neighbouring departments in connection to visiting lecturers participating in courses of the Graduate School, graduation seminars for LIC- or PhD-students or other Ad Hoc seminars by visitors or in house researchers. On top of this we also arrange seminars within workshops and conferences, about which you can read more further below.

The seminars have been led by Anders Neergaard and Magnus Dahlstedt.

■ Seminars autumn 2009

- **2/9** Working seminar, Charles Woolfson: 'More 'exit' after 'voice'? Anticipating likelihood and consequences of a 'second surge' from Baltic new EU member states'.
- **9/9** Final seminar, Jenny Kiiskinen & Sigrid Saveljef: 'Ett demokratiskt dilemma? Moderaternas och Socialdemokraternas strategiska bemötande av Sverigedemokraterna – ett lokalpolitiskt perspektiv'.
- **24/9** Graduation seminar (Lic. Diss), Inge Dahlstedt: 'Education and Labor Market Integration. The Role of formal education in the process of ensuring a place in the occupational structure for natives and immigrants'.
- **30/9** Guest seminar, Lucy Edwards Jauch, PhD in sociology, University of Namibia: 'HIV/AIDS and Social Inequality: Intersection between Race, Gender and Class'.
- **5/10** Graduate school, Maritta Soininen: 'Anti-Discrimination Measures and Divergent Understandings of Discrimination'.
- **6/10** Graduate school, Charles Woolfson: 'Adding New Challenges – Discrimination and Citizenship in the New EU Member States'.

- **7/10** Graduate School, Lois Wise, Professor, Indiana University, USA: 'Globalisation and the Impact of Insourcing Foreign Professionals on Government and the Nonprofit Sectors'.
- **8/10** Graduate School, Masoud Kamali, professor in social work, Mid Sweden University: 'Racial Discrimination and Post-Colonial Perspectives'.
- **9/10** Graduate School, Lois Wise, professor, Indiana University, USA: 'Diversity Management – Experiences, Research and Policy Developments'.
- **14/10** Working seminar, Aimee Rindoks, guest PhD cand. at REMESO from Amsterdam University: 'Examining the 'Global Competition for Talent': Are Mobility and Skilled Migration Advancing through a New European ERA?'.
- **21/10** Graduation seminar (diss), Eleonora Narvselius: 'The Nation's Brightest and Noblest: Narrative Identity and Empowering Accounts of the Ukrainian Intelligentsia in Post-1991 Lviv'.
- **28/10** Working seminar, Nazli Senses, Guest PhD cand. at REMESO from Ankara University: 'Varieties of Rights, Democracies and Irregular Immigration: Comparing Greece, Spain and Turkey'.
- **11/11** Workshop, Mats Trondman, Lisbeth Eriksson, Magnus Dahlstedt & Fredrik Hertzberg: 'Civil Society and Strategies for Social Inclusion in the Multi-Ethnic City'.
- **25/11** Graduate school, Gülay Toksöz, Ankara University: 'Gendered Experiences of Irregular Migration: The Case of Turkey'.
- **9/12** Working seminar, Anna Bredström: 'Alkohol, ungdomar och sex: Intersektionella perspektiv på sexuellt risktagande'.

■ Seminars spring 2009

- **14/1** Graduation seminar, Jenny Kiiskinen & Sigrid Saveljef: 'The democratic dilemma: The Swedish political system's response to Sweden Democrats'.

- **20/1** Working seminar, Catarina Lundqvist: 'Parent aspirations, capital and social mobility'.
- **21/1** Graduate School, Professor Russel King, University of Sussex: 'Out of Albania: from crisis migration to integration and development?'.
- **27/1** Final seminar (diss), Mozghan Zachrisson: 'The invisible voices: adult immigrant's language learning in an individual and institutional context'.
- **28/1** Final seminar (diss), Eleonora Narvselius: 'Narrative Identities and Power narratives of the Ukrainian intelligentsia in Post-1991 Lviv'.
- **4/2** Working seminar, Rune Johansson & Tünde Puskás: 'Swedish as the language? Nation, economy and multiculturalism in today's English school'.
- **6/2** Graduation seminar (diss), Tünde Puskás: 'Narratives of Belonging: Home Country and Nationhood in Territorial and Non-territorial Settings'.
- **18/2** Working seminar: Magnus Dahlstedt & Frederick Hertzberg: Book chapter, forthcoming.
- **25/2** Graduate School: Helma Lutz, Johann W. Goethe University, Frankfurt: Title announced later.
- **4/3** Working seminar: Daniel Lindvall PhD cand., Dept. of Sociology, Södertörn University: 'Building Public Institutions in Bosnia and Herzegovina'.
- **18/3** Working seminar, Fataneh Farahani PhD, Dept. of Ethnology, Stockholm University: 'Diasporic Narratives of Sexuality: Identity Formation among Iranian-Swedish Women'.
- **31/3** Graduate School, Eleonore Kofman, University of Middlesex: 'Immigration and Citizenship: Implications for regional governance and identities'.
- **1/4** Graduate School, Charlie Jeffery, University of Edinburgh: 'The Regionalisation of Social Citizenship'.
- **2/4** Graduate School, Giuseppe Sciortino, University of Trento: 'Citizenship, Trans-National, Post-National or Cosmopolitan?'.
- **29/4** Working seminar, Sabine Gruber: 'Experiences from ongoing field study'.
- **27/5** Final seminar (diss), Catarina Lundqvist: 'Career choices for young people with immigrant background'.
- **2/6** Working seminar, Alireza Behtoui & Anders Neergaard: 'Social capital and discrimination, findings from an industrial case study'.
- **3/6** Graduation seminar, Caroline Tovatt: 'Informell rekrytering. Betydelsen av etnicitet, klass och kön i förhandlingen av det sociala kapitalet'.
- **9/6** Guestseminar, Sarah Valdez, Guest PhD cand. at REMESO from Dept. of Sociology, University of Washington: 'Integrating Muslims in Western Democracies: Reactive Identity, Religious Regulation, and the Social Structure of Islamism'.
- **10/6** Guestseminar, Olle Sahlström, social critic, author: 'In the shadow of greatness: The flight from European Trade Unions'.

■ Seminars autumn 2008

- **10/9** Guest seminar, Ulf Sandström, Ass. Professor, LiU, expert on bibliometry: 'Publication strategies and research political trends'.
- **16/9** Guest seminar, Volker Winterfeldt, University of Namibia: 'Labour Migration: Apartheid and Post-apartheid Transitions to Poverty'.
- **24/9** Working seminar, Anna Lundberg, PhD, Lecturer in Human Rights, Malmö College: 'The principle of childrens best in the Swedish asylum process – a study of the discrepancy between policy and praxis'.
- **1/10** Guest seminar, Jonas Malmberg, Professor in Law, Uppsala University: 'Employment conditions for workers stationed abroad in the light of the Laval and Viking rulings'.
- **14/10** Working seminar, Nazem Tahvilzadeh, PhD cand., School of Public Administration, University of Gothenburg: 'Ethnic Minority Administrators and Active Representation'.
- **15/10** Working seminar, Mikael Rundqvist: 'Integration in an implementation perspective for evaluators and street level bureaucrats'.

- **21/10** Full day workshop with Stephen Castles, Raúl Delgado Wise, Ronaldo Munck and Charles Woolfson: 'Migration, Globalisation, and Precarious/Decent Work'. See more below in section on 'Conferences and Workshops'.
- **5/11** Working seminar, Magnus Dahlstedt & Fredrik Hertzberg: 'Presentation of introduction to forthcoming book'.
- **25/11** Working seminar, Martin Klinthäll & Susanne Urban: 'Competence and contacts—a research proposal on the importance of different forms of social relations for labour market establishment among youth with foreign background'.
- **26/11** Working seminar, Maritta Soininen: 'Institutions matter—governance makes difference. The case of Dutch and UK policies'.
- **27/11** Working seminar, Martin Qvist: 'Coordinated reception? Governing and coordinating processes in the introduction and reception of refugees'.
- **9/12** Working seminar, Sabine Gruber: 'In the school's goodwill to address 'honour related violence''.
- **17/12** Working seminar, Josefina Syssner and Khalid Khayati: 'The political geography of charter traveling—on the issue of Swedish charter tourism in ethnic conflict area'.
- **12/3** Guest seminar, Denis Frank, PhD, Dept. of Sociology, Lunds Universitet: Presentation of study on globalisation and labour migrants—the building sector in Sweden.
- **4/4** Graduation seminar (diss): Anna Bredström: 'Safe Sex, Unsafe Identities: Intersections of 'Race', Gender and Sexuality in Swedish HIV/AIDS Policy'.
- **9/4** Working seminar, Peo Hansen: Presentation of a chapter from forthcoming book.
- **23/4** Working seminar, Mikael Rundqvist: Presentation of paper.
- **29/4** Working seminar, Tobias Hübinette and Carina Tigervall, Mångkulturellt Centrum and Centrum för genusvetenskap, Lunds universitet: Presentation of research projekt about talks with adoptive parents on race, racism.
- **14/5** Working seminar, Anders Neergard: 'Between workers and management—industrial groupleaders and group homogeneity'.
- **27/5** Working seminar, Magnus Dahlstedt: Chapter of forthcoming book.
- **28/5** Working seminar, Charles Woolfson: 'Labour migration and ethno-politics in Latvia: A 'European Dilemma'?'.
- **4/6** Working seminar, Branka Likić-Brborić: 'Globalisation, EU Enlargement and New Migratory Landscapes: The Challenge of the Informal Economy and Contingencies for 'Decent Work''.

■ Seminars spring 2008

- **16/1** Working seminar, Susanne Urban: "Social capital' and networks'.
- **24/1** Final seminar (diss), Khalid Khayati: 'From victim diaspora to transborder citizenship'.
- **30/1** Working seminar, Carl-Ulrik Schierup: Discussion of the Research programme of REMESO.
- **5/2** Working seminar, Åsa Wettergren, Karlstads Universitet: 'Paper on reception of asylumseekers in three EU-countries from an emotio-sociological perspective'.
- **13/2** Working seminar, Josefina Syssner: 'Branding Places—a new form of urban and regional governance'.
- **5/6** Graduation seminar (diss), Khalid Khayati: From Victim Diaspora to Transborder Citizenship—Diaspora Formation and Transnational Relations among Kurds in France and Sweden.
- Working seminar (60% for diss.), Jenny Kiskinen & Sigrid Saveljeff: 'The democratic dilemma: The Swedish political system's response to Sweden Democrats'.

■ Seminars autumn 2007

- **4/9** Final seminar (diss), Anna Bredström: 'Safe Sex, Unsafe Identities: Intersections of 'Race', Gender and Sexuality in Swedish HIV/AIDS Policy'.

- **4/9** Working seminar, Brigitte Suter: 'Survival Strategies of Transit Migrants in Istanbul'.
- **11/9** Working seminar, Alireza Behtoui & Anders Neergaard: 'Perception of discrimination in recruitment and place of work'.
- **18/9** Guest seminar, Prof. Jannie Hunter, University of Namibia: 'The Role of the Church in and after the Struggle for Independence in Namibia'.
- **2/10** Working seminar, Josefina Syssner: 'The Role of Culture in Regional Policy'.
- **5/10** Graduation seminar (diss) Dina Avrahami: 'Vi dansar inte på bordet– Lesbiska invandrarkvinnor i Sverige: stigmatisering & stolthet'.
- **17/10** Working seminar, Martin Qvist: Paper presentation.
- **18/10** Guest seminar, Floya Anthias: Presentation of paper.
- **30/10** Working seminar, Sayaka Osanami: 'Attitudes Towards Inter-marriages'.

■ Seminars spring 2007

- **27/2** Working seminar, Alireza Behtoui: 'Reflections on quantitative methods'.
- **6/3** Working seminar, Josefina Syssner: 'Att Mäta förtroende' (To measure trust).
- **13/3** Working seminar, Susanne Urban and Zoran Slavnic: 'Etnisk märkning av taxibranschen'.
- **20/3** Guest seminar, Diana Mulinari, Ass. Professor, University of Lund: 'Genus, Klass och Kön' (Gender, Class and Sex).
- **17/4** Working seminar, Tobias Hübinette: 'Adoption, Diskriminering och Etniskt Identitet'.
- **8/5** Working seminar (diss, 60%), Eleonora Narveslius: 'Generational specificity of narratives on national and class identity among Ukrainian intelligentsia in L'viv'.
- **11/5** Graduation seminar (diss), Sabine Gruber: 'Skolan gör skillnad–etnicitet och institutionell praktik' (The School makes Difference).
- **16/5** Final seminar (diss), Dina Avrahami: 'Lesbiska invandrarkvinnor i Sverige: stigmatisering & stolthet'.
- **4/6** Working seminar (diss, 60%), Mozghan Zachrisson: 'The invisible voices–Paradoxes about adult migrant language teaching and the negotiating of identities'.
- **5/6** Working seminar (diss, 60%), Inge Dahlstedt: 'The Effect of Education in the Local and National Labour Market'.



Workshops and Conferences

REMESO has during its initial period arranged several smaller workshops as well as some larger conferences. This has been a very important way to establish the Institute in the wider research community as well as to maintain and build up channels for intellectual exchange from the outset. Workshops and conferences are vital instruments for an institution to get a critical 'outside' look on its activities and a way to test ideas thoughts and findings on researchers coming from other environments, as well as a way to disseminate and contribute to the research of others. In a sense, this exchange is the way in which a research institute breaths and ensures vitality and renewal of perspectives. Below is a listing of our more important activities in this regard during the last three years, listed in chronological order.

REMESO Conferences and workshops

■ Irregular Migration, Informal Economy and Pathways to Decent Work in a Globalising Economy

IMILCO, Istanbul, December 2008

In December 2008, REMESO organised a conference in Istanbul with the SALTSA-programme at Uppsala University, Sweden, and the University of Ankara in Turkey. The conference was financed by the Swedish Consulate General in Istanbul and The Swedish Council for Working Life and Social Research (FAS).

This conference was the seventh in a series of activities within the academic collaboration of IMILCO which is presented more in full in the section on academic networks and collaborations, below in this chapter. The conference addressed the problems of irregular migration and informal economy and related changes

in work life and migration regimes, stressing in particular a transatlantic EU/NAFTA and global perspective

Scientific organising committee: Charles Woolfson (Chair, REMESO), Ronaldo Munck (UCD), Branka Likić-Brborić (REMESO), Carl-Ulrik Schierup (REMESO), Gulay Toksöz (Ankara University), Seyhan Erdoğu (Ankara University), Senay Gokbayrak, (Ankara University), Mats Essemyr (TCO, Sweden), Bo Johansson (SALTSA, Uppsala).

SESSION 1. CASE STUDIES OF LABOUR INFORMALISATION

SESSION 2. TRADE UNIONS AND DECENT WORK

SESSION 3. REGULATORY, NORMATIVE AND LEGAL DIMENSIONS

■ Is there a Regional Citizenship? – Nordic Outlooks

Norrköping, March 2009

REMESO, LiU, and the Nordic section of the Regional Studies Association (RSA) organized in March 2009 a workshop on 'Regional citizenship'. The workshop was financed by Formas, the Swedish Research Council for Environment, Agricultural Sciences and Spatial Planning and REMESO, main responsible for the initiative and the organisation was Josefina Syssner, REMESO.

The literature on regionalism and regionalisation has grown considerably, and so has the literature on citizenship. Yet, few attempts had, so far, been made to bridge these fields. Accordingly, this workshop was meant to remedy this omission and to provide an opportunity for a profound discussion of the concept of 'regional citizenship'.

The conference was held in 2 sessions and a closing panel and gathered around 15 researchers from the field presenting papers. The researchers came from Sweden, Scandinavia and UK and Holland.

■ Migration, Citizenship and Precarious Labour: Global and Regional Perspectives in Times of Crisis

REMESO Inaugural Conference, Norrköping, May 2009

On May 14–15 REMESO arranged a conference made up of three workshops on migration and labour market to mark its official inauguration. Participants came from Mexico, France, USA, England, Sweden, Denmark, Italy and Holland. The opening address was delivered by Carl-Ulrik Schierup, the Director of REMESO.

WORKSHOP 1: WHAT IS GOING ON? GLOBAL RESTRUCTURING AND REGIONAL INTEGRATION

Presentations was given by Stephen Castles, Oxford University, UK, Raul Delgado Wise, University of Zacatecas, Mexico, Branka Likić-Brborić, REMESO, LiU and Peo Hansen, REMESO LiU. Moderator was Aleksandra Ålund, REMESO, LiU, discussants was Nora Rähzel, Umeå University and Stefan Jonsson, REMESO, LiU.

WORKSHOP 2: WHAT IS TO BE DONE? CITIZENSHIP, INDUSTRIAL RELATIONS, CIVIL SOCIETY

Presentations was given by Luin Goldring/Patricia Landolt, York University, Sonia McKay, London Metropolitan University, Ruth Milkman, UCLA, Berkeley and John Solomos/Milena Chimienti, City University, London. Moderator was Anders Neergaard, REMESO, LiU and discussants was Jan Rath, Amsterdam University with Ellie Vasta, University of Oxford.

WORKSHOP 3: CROSSING DISCIPLINARY DIVIDES: METHODOLOGICAL CHALLENGES AND FUNDING OPPORTUNITIES

Presentations given by Steve French, Keele University, Guglielmo Meardi, University of Warwick and Sonia McKay, London Metropolitan University. Moderator was Charles Woolfson, from REMESO, LiU.

■ International Workshop on New Migration, Labour and Globalization

Norrköping, October 21, 2008

This workshop raised some critical issues connected to migration and labour today and, more specifically, was created to give input to a REMESO-based network application in progress on ‘New Migration’.

SESSION 1: THE NEW MIGRATION, PRECARIOUS WORK AND SUSTAINABLE HUMAN RESOURCES: A CASE FOR THE ‘DECENT WORK’ AGENDA

SESSION 2: LABOUR AND THE CHALLENGES OF GLOBALIZATION: WHAT PROSPECTS FOR TRANSNATIONAL SOLIDARITY

Participants: Ingemar Lindberg, Agora Think Tank, Stephen Castles, Oxford University – COMPAS, Raúl Delgado Wise, Univ. of Zacatecas, Mexico, Ronaldo Munck, Dublin City University, Ireland, Charles Woolfson, REMESO, Linköping University.

■ Anthropological and historical approaches to ethnicity minority issues in Central Europe

2007

Workshop with participants from Hungary, Czech Republic and Finland, arranged by Rune Johansson and Tünde Puskás.

Workshop- and Conference participation

REMESO researchers are actively participating in conferences, workshop and seminars at other departments and universities as well as in other settings. Below we have listed the participation in national and international research exchange activities, either through paper presentation, as commentators on presentations or as key-note speakers or some other function, for each researcher.

ALIREZA BEHTOUI

- *Utbildning och arbete; unga människor med invandrarbakgrund*, lecture, ABF, Stockholm, February 21, 2008.
- Paper presentation, 'Marriage Pattern of Immigrants in Sweden', SULCIS integration conference in Växjö, October 16–17, 2008
- Participant at TIES RTN Workshop, Second generation & Identity that will be taking place at the Kadir Has University in Istanbul, on February 26–28 2009, Istanbul, Turkey.
- Paper presentation at TIES RTN Workshop, 'Descendants of natives and Turkish immigrants relate about their perceptions on discrimination', 24–28 November Paris,
- Paper presentation, 'Social capital and wage differentials between immigrants and natives', IMISCOE annual conference, September 2009 Stockholm.
- Paper presentation, 'Variability, complexity and contextuality of Social Capital: Methodological reflections from a study of employee social networks and status attainment', February 2010, SULCIS seminar, Stockholm University.

ANNA BREDSTRÖM

- Paper-presentation, *KULTUR–NATUR: Konferens för kulturstudier i Sverige 2009*, Norrköping, June 15–17, 2009, paper-presentation: 'Intersectionality and Sexual Risk Taking: Developing Feminist Safer-Sex Research'.

- Invited to give a talk, 'Norms and sexual risk-taking among young people of different backgrounds', at the conference *UNG 2009* (Young 2009), Virserums konsthall, April 28, 2009.
- Paper-presentation, 'Sex, Risk and Safety: Intersectional Perspectives on Youth and Sexual Health' at *Critical Feminist Dialogues on Sex Education, Violence and Sexology: Between Agency, Pleasure, Shame and Pain 1*, Linköping University, June 15–17, 2009.
- Paper-presentation, 'Youth, Sex, Risk and Safety: Towards an Intersectional Analysis' at *Critical Feminist Dialogues on Sex Education, Violence and Sexology: Between Agency, Pleasure, Shame and Pain 2*, Linköping University, November 24–16, 2009.
- Paper-presentation, National Institute for the Study of Ageing and Later Life's Research Seminar, Department of Social and Welfare Studies, Linköping University, February 28, 2008. 'Intersectionality as concept and method'.
- Paper-presentation, Department of Gender Studies Higher Seminar, Linköping University, October 8, 2008. 'Safe Sex, Unsafe Identities: Intersections of 'Race', Gender and Sexuality in Swedish HIV/AIDS Policy'.
- Invited to give a talk, 'From Cultural Pluralism to Cultural Assimilation: Migrants in Swedish HIV/AIDS Policy 1985–2005' at *Forum for Sexual Health*, organized by the unit for HIV/STI-prevention in Region Västra Götaland, November 12, 2008.
- Paper-presentation, *Emotioner & Skandinaviskt Genus?* (Emotions and Scandinavian Gender?), Umeå University, October 3, 2008. Key-note address 'Seductive Otherness and Exotic Places in Swedish HIV/AIDS Policy'.
- Paper-presentation, *Gender Unbound*, Keele, UK, July 9–11, 2007. 'Race', Gender and Sexuality in Swedish HIV/AIDS Policy Discourse'.

MAGNUS DAHLSTEDT

- (2007) 'Spekulationer kring en postpolitisk samtid', SWEPSA Annual Meeting, October 17–19, Norrköping.
- (2008) "Inga afrikaner ska lära oss om demokrati: Aktivt medborgarskap, invandrarskap(ande) och villkorat deltagande', *Bortom rösträtten*, 12 juni, Samtidshistoriska institutet, Södertörns högskola.
- (2008) 'Democratic (Govern)mentality: Movement Ideals and National Imaginations in Sweden', *Irregular Migration, Informal Economy and Pathways to Decent Work in a Globalising Economy*, December 4–5, Istanbul.
- (2008) 'Det svårfångade 'kulturmötet': Mångfald och skillnadsskapande inom den entreprenöriella akademien', *Bologna – vad har hänt på LiU?*, 11 december, Centrum för undervisning och lärande, Linköping University.
- Ålund, Aleksandra & Lundqvist, Catarina (2008) 'Utbildning, arbete, medborgarskap', *Resultatdialog 2008*, 16 oktober, Karlstads universitet.
- (2009) 'Politik – eller konsten att göra om sig: Beträktelser över en postpolitisk samtid', *From Welfare Systems to Welfare Societies: Changing Perspectives of Nordic Welfare Model(s) in Times of Globalization*, Nordiskt sommaruniversitet, January 22–24, Centrum för kommunstrategiska studier, Norrköping.
- (2009) 'The Partnering Society: Governmentality, Partnerships and Active Local Citizenship', *A Regional Citizenship? Nordic Outlooks*, March 31–April 1, REMESO, Norrköping.
- (2009) 'Tycker du att du förtjänar ett hjärta?' Medborgarideal, skolterapi och viljan att styra', *Utmanad: utmanande*, June 2–4, Institutionen för beteendevetenskap och lärande, Linköping University.
- (2009) 'Popular Movements for Whom? Governmentality, Civil Society and Democracy the Swedish Way', *Civil Society as Arena of Learning*, June 11–13, Södertörns högskola.

- (2009) 'Coachning eller bekännelse? Föräldracoachning som styrning genom mentalitet', *Kultur ~ natur: Konferens för kulturstudier i Sverige*, June 15–17, ACSIS, Linköping University, Norrköping.
- & Tesfahuney, Mekonnen (2009) 'The Gambling State: Speculative Pedagogy and Governmentality', *Migration, State and Pedagogy: Exploring a New Research Area of Pedagogy*, August 26–27, Tisvilde, Danmark.
- & Tesfahuney, Mekonnen (2009) 'The Speculative State, Education and the Commons', *What is the Common?*, October 10–11, Göteborg University.

ÅSA-KARIN ENGSTRAND

- Moderator, session on Empowerment, the European Social Fund's conference on Integration, December 17, St Gertrud, Malmö.

SABINE GRUBER

- Paper-presentation, 'En studie om etnicitet, kön, pojkar och unga män i institutionsbehandling' at net-work conference *Nationella nätverket för socialpedagogik* (The National Net Work for Social Pedagogy), 2008.
- Invited to give a talk 'Metodval i kvalitativ forskning om barn och ungdomar på institutioner – möjligheter och begränsningar' at the Department of Thematic Studies, Thema Child, Linköping University, January 2009.
- Paper-presentation 'En studie om etnicitet, kön, pojkar och unga män i institutionsbehandling – preliminära iakttagelser', at FORSA (Swedish Association for social work research) annual national conference, Örebro, March 2009.
- Invited to give a talk "‘Honour’ related violence and the schools measures' at the Center for Research in International Migration and Ethnic Relations (CEIFO), Stockholm University, May 2009.
- Invited to ArA (Anti Racist Academy) seminar about 'honour related violence' to make a critical analyze of the report 'En undersökning av flickor och pojkar som lever under hedersrelaterad kontroll i Stockholms stad', June 2009.

- Paper-presentation 'En studie om etnicitet, kön, pojkar och unga män i institutionsbehandling—presentation av ett pågående forskningsprojekt', at the Department of Sociology, Lund University, October 2009.
 - Paper-presentation 'Konstruktioner av nation och kön i den svenska skolans insatser mot 'hedersrelaterat' våld', at the Department of Social Work, Mid Sweden University, November 2009.
 - Paper-presentation, 'En studie om etnicitet, kön, pojkar och unga män i institutionsbehandling' at net-work conference *Nationella nätverket för socialpedagogik* (The National Net Work for Social Pedagogy), 2008.
- PEO HANSEN**
- Invited to a panel presentation: International conference 'European Policy Forum 2007 on Asylum'. Swedish European Social Fund Council, European Social Fund. Malmö, 22–24 May 2007.
 - Invited as commentator on two keynote speakers: International conference 'INTER: A European Cultural Studies Conference in Sweden'. Advanced Cultural Studies Institute of Sweden (ACSIS), Association for Cultural Studies (ACA). Norrköping, 11–13 June 2007.
 - Invited to give a talk and participate in a panel discussion: '8th Annual Conference of the European Sociological Association'. Glasgow, 3–6 September 2007.
 - Invited to participate in the international workshop 'Social Policy and Migration In Developing Countries'. United Nations Research Institute for Social Development, IOM, Institute for Future Studies and Sida. Stockholm, 22–23 November 2007.
 - Invited to guest lecture at the Research Seminar at the Department for Studies of Social Change and Culture (ISAK), Linköping University. Norrköping, 4 December 2007.
 - Invited to give a keynote lecture: International conference 'A European Welfare State: Utopia?' The Austrian League for Human Rights and the Unruhe Private Trust. Vienna, 27–28 March 2008.
 - Invited to give a lecture to the Swedish Ministry for Foreign Affairs. Stockholm, 17 June 2008.
 - Invited to participate in the International Seminar: 'Migration, Remittances and Development: Africa Migration Project'. The World Bank and SIDA. Stockholm, 17 June 2008.
 - Invited to give a keynote lecture: International conference 'Integration and Diversity: Diversity, Civic Participation and Sustainability in Europe'. SUSDIV and CINEFOGO. Copenhagen, 1–3 October 2008.
 - Invited to give a keynote lecture: Swedish conference: 'Internationell migration: Utmaningar och möjligheter'. Centre for Research in International Migration and Ethnic Relations (CEIFO), Stockholm University. Stockholm 3 October 2008.
 - Invited to give a lecture (together with Stefan Jonsson) at the Globalization Seminar, Gothenburg University. Gothenburg, 12 May 2009.
 - Invited to a panel presentation: Book release symposium: 'The Future of European Integration'. Arena Idé. Stockholm, 13 May 2009.
 - Invited to give a keynote lecture: International conference 'Integrating Differences: Human Rights, Social Inclusion and Social Cohesion in the Balkans on Its Road to the EU'. Institute for Social and Humanities Research, Skopje, and the Jean Monnet Programme. Ohrid, Macedonia, 28–31 May 2009.
 - Invited to talk and chair a plenary: International conference 'Challenging Power: Equality, Culture and Minorities'. Academy of Finland, University of Helsinki. Helsinki, 27–28 August 2009.
 - Invited to give a lecture to the Swedish Ministry of Justice (Migration and Asylum Policy Unit). Stockholm, 3 September 2009.
 - Invited to chair a plenary: '14th International Metropolis Conference: Migration and Mobility'. Copenhagen, 14–18 September 2009.

- Invited to talk: International Research Seminar 'Migration: A Question for Global Policy'. Arena Program, Amnesty International, Institute for Future Studies, Re:Orient, Swedish Red Cross. Stockholm, 2 November 2009.

STEFAN JONSSON

- CEIFO, Stockholm University, 11 December 2009. 25-year-celebration Symposium. Keynote: 'Europe through Africa, Africa through Europe. The Relation of European Integration and Colonialism'.
- Gothenburg University, 26 Nov 2009. Swedish Association for Womens and Gender Studies Annual Conference. Keynote: 'A Woman's place in the world order. Perspectives from literature and arts'.
- Nordic Africa Institute, Uppsala, 17 June 2009. International conference 'What's Culture Got to Do with It'. Keynote: 'Europe through Africa, Africa through Europe: Reconstructing the relation of European integration and colonialism'.
- Uppsala University, SLAT & English department, 1 June, 2009. Conference 'Re-Locating Ethics'. Respondent on Paul Gilroy's Keynote Lecture.
- Södertörn University, Stockholm. 1 December 2008: Conference 'Different Times, Different humanities. Invited Lecture: 'The Humanities in the Face of Postcoloniality'.
- Bard College, Center for Curatorial Studies, New York, 14 Nov 2008: Invited Lecture: 'Images of the Masses in Documentary Narration'.
- Århus University, School of Aesthetics, 26 Sept, 2008. Conference 'Confronting Universalities'. Keynote: 'The ideology of Universalism'.
- Världskulturmuseet, Göteborg, 10 April 2008. International seminar 'How Big is Your World? Cultural Policy and Globalization'. Invited lecture: 'Museum, Market, or Métissage: Choices for National Policies of Arts and Culture in Times of Globalization'.
- Nordic Center for Journalism, Århus – Berlin 14 Feb 2008. NJC:Cultural Meeting. Invited Lecture: 'Kulturjournalistikken i Norden, hvordan har den det?'.

- Helsingfors University and Hanaholmen cultural center, 20–21 april, 2007. Conference 'What is Nordic Literature?' Invited Lecture: 'Norr om Södern, öster om Västern, väster om Östern. Ett försök att positionera bestämma den nordiska texten'.
- Iaspis, Stockholm, 18 sept.2007. Symposium 'Slowly learning to survive the desire to simplify. A symposium on Critical documents. Keynote: 'Realism in Contemporary Documentary Aesthetics'.

MARTIN KLINTHÄLL

- Paper presentation 'Capital, Strategies and Networks for Labor Market Careers among Younger People of Immigrant Backgrounds. Report from a pilot survey'. Socties Workshop, 4–5 February 2010, Aalborg University, Denmark.
- Paper presentation: 'Migration and health: A study of effects of early life experiences and current socioeconomic situation on mortality of immigrants in Sweden'. *Lund Integration Conference*, Lund University, 5–6th November, 2009.
- Paper presentation 'Företagande bland personer med utländsk bakgrund i Linköpings kommun' *Linköping – Där invandrarföretagsamhet blir verklighet*, [On Immigrant Entrepreneurship] Arranged by NuLink, Linköping Konsert och Kongress, 23 September 2009.



- Paper presentation. 'Kartläggning av invandrarföretagande i Norrköping och Linköping' *Frukostmöte Invandrarföretagande* Arranged by NuLink and Jobbtorget Linköping October 21, 2008.
- Invited participant *Växjö Integration Conference*, Växjö University, 16–17 October, 2008.
- Paper presentation. 'Kartläggning av invandrarföretagande i Norrköping och Linköping' Workshop with municipality representatives. Näringslivets Hus, Norrköping April 23, 2008.
- Invited speaker 'Who are the return migrants?' *Frivillig Återvandring – Vad är det? Seminar on voluntary return migration*. Arranged by GöteborgsInitiativet, Gothenburg, 16 March 2008.

BRANKA LIKIĆ-BRBORIĆ

- Paper presentation, 'Global Governance, EU Enlargement and Development: New Migration, Transnationalism and the Political Economy of Europeanization of Bosnia-Herzegovina' at the *Annual Meeting of the Swedish Political Science Association*, Uppsala, September 26–27, 2008.
- Paper presentation, (with Charles Woolfson) 'Migrants and the unequal burdening of toxic risk' at IMILCO Conference *Irregular Migration, Informal Economy and Pathways to Decent Work in a Globalising Economy*, Istanbul 4–5 December 2008.
- Paper presentation, 'Globalisation, EU Enlargement and the Challenge of the Financial Crisis: East-West Migration and the Search for EU Solidarities' at *The 9th European Sociological Association Conference*, Lisboa, 02–05 September 2009.
- Invited participant, paper presentation and discussant, 'Globalisation, EU enlargement and New Migratory Landscapes: The Challenge of Global Financial Crisis and the Search for EU Solidarities' at the Conference *Security Insecurity and Migration in Europe*, University of Leicester, 18–19 September 2009.
- Paper presentation for the meeting of the network *Trade Unions, Globalisation and Transnational Solidarity*, Norrköping 9–10 November 2009, paper 'Globalisation, EU Enlargement and the Challenge of Financial Crisis: East-West Migration and the Search for EU Solidarities'.

ANDERS NEERGAARD

- SULCIS annordnar en integrationskonferens den 23–24 oktober 2007 på Foresta Hotell på Lidingö.
- Session facilitator IMILCO Workshop 'Irregular Migration, Informal Economy and Pathways to Decent Work in a Globalising Economy', Armada Hotel, Istanbul, December 2008.
- Workshop, FAS Financed Network: Trade unions, globalisation and transnational solidarity, Oct. 21–22, 2008.
- Workshop, FAS Financed Network: Trade unions, globalisation and transnational solidarity. April 20–21, 2009.
- Workshop, FAS Financed Network: Trade unions, globalisation and transnational solidarity, Nov. 9–10, 2009.
- Workshop Organiser 'Methodological approaches to the study of Social Capital and Intersectionality' at the Feminist Research Methods Conference, Stockholm University, February 6–4, 2009.
- Conference paper presentation 'Another complexity: intersections and social capital in working life studies' at the Feminist Research Methods Conference, Stockholm University, February 6–4, 2009.

MARTIN QVIST

- Statsvetenskapliga förbundets årsmöte (2007), IEL, Linköpings University, Norrköping, Sweden. Paper presentation: 'Integration och organisation: ett förvaltningspolitiskt perspektiv på mottagande och riktade åtgärder'.
- Political Institutions seminar (2007), Department of Political Science, Stockholm University, Sweden. Paper presentation.
- Political Institutions seminar (2007), Department of Political Science, Stockholm University, Sweden. Commentator.
- ECPR Joint Sessions (2008), Institut d'Etudes Politiques, Rennes, France. Paper presentation: 'Managing Immigrant Integration in the Welfare State: Post-NPM Strategies, Past Reforms and the Institutionalized Context'.

- NOPSAs XV Conference (2008), Tromsø University, Tromsø, Norway. Paper presentation: 'Collaborative Efforts for Labour Market Integration? Implementation of Introduction Programmes in Sweden'.

MIKAEL RUNDQVIST

- Annual meeting with the Swedish Political Science Association (2007), IEI, Linköpings University, Norrköping, Sweden.
- Annual meeting with the Swedish Political Science Association (2008), Uppsala University, Uppsala, Sweden.
- Opening speech at the TIA-conference (TIA-dagen) in Norrköping 2009-05-18, organized by The European Social Fund's Thematic group on Inclusion.
- Representative from the European Integration Fund in Sweden at the European Forum 'Managing Migration Together – Getting more out of Migration Funds: Effective programming and evaluation', 22–23 September 2009, Brussels (European Commission - Directorate- General Justice, freedom and security).
- Moderator for the theme 'To implement integration policy at the regional level' on 'The Integration Day' in Malmö 2009-12-17, organized by the European Social Fund (Svenska ESF-rådet) in Sweden.

CARL-ULRIK SCHIERUP

- Key-note address with Aleksandra Ålund, 'From Paradoxes of Multiculturalism to Paradoxes of Liberalism' at the conference *Nation-State, Immigration and Cultural Pluralism*. Moscow, 18–19 September 2009. Organisers: Friedrich Ebert Foundation, The Russian Academy of Sciences Centre for Research on Citizenship and Identity, Eurasian Political Studies Network.
- Paper-presentation with Aleksandra Ålund: 'Labour & migration in an era of neoliberal globalization and beyond' on *Workshop of the Critical Development Studies Network*, Zacatecas, Mexico, 13–14 March 2008.
- Panel presentation, 'Migration, Citizenship, and the European Welfare State, on *GLO-MIG second international workshop*, South East European Studies at Oxford (SEESOX) and Centre on Migration, Policy and Society (COMPAS), Oxford University, 22–23 February, 2007.

- Key-note address 'Migration, Citizenship and the European Welfare state' at CINE-FOGO (Civil Society and New Forms of Governance in Europe) Network of Excellence. *Midterm conference on European Citizenship. Challenges and Consequences*, Roskilde University, Denmark, June 2007.

ZORAN SLAVNIC

- Paper presentation 'Conflicts and Inter-Ethnic Solidarity: Integration Processes Among Immigrants from Former Yugoslavia', Paper read at Conference: Understanding Conflicts – Cross-Cultural Perspectives, at Århus University, Denmark, August 19–22, 2008.
- Paper presentation 'Swedish taxi industry – deregulation, re-commodification, ethnification, informalization', Paper read at Conference: Irregular Migration, Informal Labour and Community in Europe (IMILCO). Istanbul, December 4–5 2008.
- Paper presentation, 'Taxi driver – precarious work, ethnic segmentation and informal economic strategies in the Swedish taxi industry', Paper read at 14th International Metropolis Conference, Copenhagen, September 14–18, 2009.

JOSEFINA SYSSNER

- Paper presentation, 'No Space for Citizens?', at *Is There a Regional Citizenship?*, International workshop arranged by REMESO and Regional Studies Association, Norrköping, Sweden, 2009.
- Paper presentation, 'The Role of Culture in Regional Development Policy', *Svenska Historikermötet*, Lund, 2008.
- Paper presentation, 'Definitions of Regionalism', at *Nordic Geographers Meeting*, Bergen, Norway, June 2007.
- Paper presentation, 'Top Down Regionalism? – Methodological implications in studies of regionalism', at *4th ECPR General Conference*, Pisa, 2007.

CAROLINE TOVATT

- Paper presentation, 'Intersectionality and informal recruitment' at *Feminist Research Methods – an international conference*, 4–6 february, 2009, Stockholm university, Sweden.

SUSANNE URBAN

- *Compensation strategies? Immigrant's intergenerational educational careers*. Paper presented at Integration Conference, Lund 5–6th November, 2009.
- *Utanförskap och grannskapseffekter*, Lecture for Norrköping municipality, 14th oktober, 2009.
- *Vem söker vidare till högre utbildning och hur kan vi hitta nya vägar till breddad rekrytering*. Lecture and workshop organizer, Conference: 'Vem är högskolan till för?' 1–2 October, Linköping University, 2009.
- *Var finns utanförskapet? Vem är utanför vad?* 'Strimma'-lecture, Linköping University, April 21, 2009.
- *Var finns utanförskapet? Vem är utanför vad?* Public lecture, Motala bibliotek, Folkuniversitetet, 2008.
- *Capital, Strategies and Networks for Labour Market Careers Among Young People of Immigrant Background*, paper presented at 7th International Conference on Social Science Methodology, Neapel, Italy, September 1–5. Session on Network analyses, 2008.
- *Grannskapet som planeringsenhet*, lecture, conference and workshop organizer at the conference: *Samhällsbyggande och integration; Frågor om assimilation, mångfald och boende*. Vadstena Forum, 2008.
- *Polarisering i Stockholm – på gränsen till postfordism*, paper presented in *Sveriges Sociologförbunds årsmöteskonferens*, Mittuniversitetet Östersund 31th January–1th February, 2008.
- *Utbildning och arbete; unga människor med invandrarbakgrund*, lecture, Arbetets museum, Norrköping, 16th January, 2008.
- *Utbildning och arbete; unga människor med invandrarbakgrund*, lecture, ABF-huset, Stockholm, February 21, 2008.

CHARLES WOOLFSON

- 'Safety Crimes in the new EU member states' paper to international symposium *Building Justice in European Transitions: Processes of Criminalisation within Newly Emerging Democratic Societies*, University of Stirling, UK, 10–11 December 2009.

- 'Neo-liberalism, social unrest and the fragmentation of social solidarity in Baltic Lithuania: Anticipating the post-crisis migratory landscape', paper to *Debatte* conference, 1989–2009: The East European Revolutions in Perspective, University of London, UK, October 18–19 2009.
- Respondent to Alain Supiot's paper to *Constitutionalising Employment Relations*, University of Glasgow, UK, 16 October 2009.
- 'Indecent Work and Insecure Citizenship: Exploring the failed trajectory neo-liberal post-communism in terms of 'exit', 'voice' and 'loyalty', paper to international workshop on *Migration, Work and Citizenship: Toward Decent Work and Secure Citizenship*, York University, Toronto, Ontario, Canada, October 1–3, 2009.
- 'More 'exit' after 'voice'? Anticipating the likelihood and consequences of a 'second surge' from the Baltic new EU member states', paper to 2009 Annual Conference COMPAS Centre on Migration, Policy and Society, University of Oxford, *New Times? Economic Crisis, geo-political transformation and the emergent migration order*, Oxford, UK, 21–22 September 2009.
- 'The crisis in the Baltic States and the breakdown of social solidarity', keynote presentation to European Trade Union Institute trade unions workshop on Baltic crisis, Vilnius, Lithuania, 9–10 June 2009.
- 'Neo-liberalism and the fragmentation of social solidarity in the Baltic States: Can the pieces be picked up?' seminar paper to Centre for Baltic Studies, Södertörn University College, Stockholm, Sweden, 3 March 2009.
- 'Risk, Regulation and Responsibility: Migrants and the unequal burdening of 'toxic' risk', with Branka Likić-Brborić, paper to *Irregular Migration, Informal Economy and Pathways to Decent Work in a Globalising Economy*, Workshop on International Migration, Informal Economy and Community in Europe (IMILCO), Istanbul, 5 December, 2008.

- 'Are European labour standards racing to the bottom?', keynote presentation to 'Mobility of Labor: Blessing or Curse?', *Tripartite Forum on Mobility of Labor in the Baltic Sea region*, 25 November 2008, Copenhagen, Denmark, sponsored by Baltic Sea Trade Union Network (BASTUN) and Council of Nordic Trade Unions (NFS).
 - 'Europe's race to the bottom? The economic implications of the Laval verdict', paper to Socialistisk Forum, Stockholm, November 2008.
 - 'Labour standards from Laval to Lisbon' paper to international workshop on 'Labour and the challenges of globalization', REMESO, Institute for Research on Migration, Ethnicity and Society, Linköping University, Sweden, October 2008.
 - 'Migrants and the unequal burdening of toxic risk', paper with Branka Likić to international workshop, *The new migration, precarious work and sustainable human resources: A case for the 'decent work agenda'*, REMESO, Linköping University, Sweden, October 2008.
 - 'Employee representation in the Baltic countries in a historical and sociological perspective', seminar presentation on transnational employee involvement in the Danske Bank Group, Vilnius, Lithuania, September 2008.
 - 'Labour standards from Laval to Lisbon: Temporary slippage or permanent slide?', paper to *Critical Legal Conference*, Glasgow, UK, September 2008.
- ALEKSANDRA ÅLUND**
- Lecture, Institute for Future Studies, 'Ethnicitet, identitet och diskriminering', April 2009, Stockholm.
 - Keynote address, 'From paradoxes of multiculturalism to paradoxes of liberalism' at the conference: *Nation-State, Immigration and Cultural pluralism. International Conference*, Moscow, 18–19 September 2009.
 - Presentation of research and post graduate education at REMESO/ISV/LIU; seminar with postgraduate students at IMES, University of Amsterdam, 26 september, 2009.
 - Medverkan vid Paneldiskussion; Vilka är IMER-forskningens uppgifter och utmaningar, CEIFO, Stockholms Universitet, Stockholm, 11 december 2009.
 - Participant, CDS WORKSHOP March 13–15, 2008, Zacatecas, Mexico.
 - Sessionleader and lecture, 'Utbildning och arbete; unga människor med invandrarbakgrund', Arbetets museum (Museum of Work), Norrköping, January 2008.
 - Sessionleader and lecture, 'Utbildning och arbete; unga människor med invandrarbakgrund', ABF in Stockholm February, 2008.
 - Lecture, 'Kultur, etnicitet, identitet' vid konferensen: *Familjehem för ungdomar med etnisk minoritetsbakgrund*, ABF in Stockholm, April 2008.
 - Organisation and lecture, Swedish Research Council, *Resultat dialog*, Karlstad University, 16 oktober 2008.
 - Paper presentation and session chair, IMILCO conference *Migration, Populism and Xenophobia*, Istanbul, December 13–14, 2007.
 - Participant at CINEFOGO (Network of excellence) conference *European citizenship-challenges and possibilities*, Roskilde University, June 2007.
 - Participant *The Second International GLOMIG (Global migration from eastern Mediterranean and Central Asia) Workshop: 'Migration to the European Union; Challenges, Rights, Opportunities'*, University of Oxford; February 2007.
 - Lecture, 'Identitet och etnicitet', at Transkulturellt Centrum, workshop *Identitet mellan kulture*, Stockholms Regional Authority, April 2007.
 - Lecture, 'Social exkludering och motstånd: Utbildning och arbete i multi-etniska ungdomssammanhang'. The Arena group and Institute for Future Studies, Kulturhuset, Stockholm, March 2007.

Academic Networks and Editorial Assignments

REMESO's researchers are active members of a number of large and small research networks, nationally and internationally. REMESO is also leading and coordinating a handful of such collaborative ventures. Below we have listed the networks that we manage from REMESO and, further below, the participation and membership of each researcher.

■ **IMILCO – International Migration, Informal Labour and Community in Europe**

IMILCO is a Swedish-Turkish initiative focused on research and policy-issues related to international migration, informal labour and community in Europe. The project is developed by the now closed Swedish National Institute for Working Life (NIWL) and the Marmara University Research Centre for International Relations (MURCIR), in Istanbul, in cooperation with a network of European partners and sponsored by the Swedish

Consulate General in Istanbul. The Swedish management of the initiative is since February 2007 located at REMESO.

The purpose of the initiative is to integrate and develop existing knowledge through collaboration between researchers in the European Union, associated countries and neighboring regions in Eastern Europe and the southern Mediterranean. It has produced state of the art reports on research, knowledge and main problem areas related to international migration and organised a number of workshops and conferences to generate a dialogue between decision makers, NGOs and within the research community.

■ **Previous IMILCO events**

During 2007–2009 the activities within the network have consisted in a workshop, a conference and the publication of an edited volume, based on proceedings from a previous IMILCO conference (2005).



2007 Irregular Migration, Informal Labour and Community: A Challenge for Europe, edited volume published in 2007 based on texts delivered 2005 at the IMILCO conference 'Irregular Migration, Informal Labour and Community'. The volume is edited by Erik Berggren, REMESO, Branka Likić-Brborić, REMESO, Gülay Toksöz, University of Ankara, Turkey and Nicos Trimikliniotis, University of Nicosia, Cyprus. The volume was published by Shaker Publishing, Maastrich, Netherlands.

2007 Migration, Populism and Xenophobia, a workshop in Istanbul 13–14 December, Developing two new projects: New Migra and EUROMIX.

2008 Irregular Migration, Informal Economy and Pathways to Decent Work in a Globalising Economy, 4–5 December 2008, Istanbul.

Individual Activities

ANNA BREDSTRÖM

- Member of the network 'Critical Sexuality Studies', chair Prof. Nina Lykke, Linköping University.
- Co-organizer of the network 'Postcolonial Gender Research in a Nordic Context', chair Prof. Diana Mulinari, Lund University.

MAGNUS DAHLSTEDT

- Member of the Nordic research network Diaspora and Transnationalism.
- Member of SWPSA Network of Political Theory.
- Member of a Swedish research network of Social Movements.
- Member of the Swedish research network Trade Unions, Globalization and Transnational Solidarity.
- Member of the Editorial Board, *Socialistisk Debatt*, 2003-.
- Member of the Editorial Board, *The Open Political Science Journal*, 2007-.

ÅSA-KARIN ENGSTRAND

- 2005–2009 Member of the FAS-financed Network: Historical and International Perspectives on Working Lives in Sweden.

SABINE GRUBER

- Member of Nationella nätverket för socialpedagogik (The National Network for Social Pedagogy), 2008–2010.

PEO HANSEN

- Member of the researcher network 'Post-colonial Europe', with participants from Denmark, Sweden and the UK. Supported, in 2008–2009, by a Networking Grant from HERA–Humanities in the European Research Area, managed by the European Science Foundation.
- Member of the Council of European Studies, CEC—an academic organization promoting research on Europe, hosted by Columbia University.

RUNE JOHANSSON

- Member of various expertgroups for The Swedish Research Council, 'Riksbanksfonden', The Foundation for The Baltic Sea, 2007–2009.
- Part of evaluation group of Imer Malmö, Malmö University.

STEFAN JONSSON

- Member of editorial board of peer-reviewed journal *K&K. Kultur & Klasse*, Odense, Copenhagen.
- Member of the researcher network 'Post-colonial Europe', with participants from Denmark, Sweden and the UK. Supported, in 2008–2009, by a Networking Grant from HERA–Humanities in the European Research Area, managed by the European Science Foundation.
- Affiliated with Stanford Humanities Laboratory's 'Crowd Project', Stanford University.

KHALID KHAYATI

- Member of The Transnational Network
- Member of The Kurdish Academic Association.

BRANKA LIKIĆ-BRBORIĆ

- Member of Coordinating team of IMILCO–International Migration, Informal Economy and Community in Europe.
- Participant in the research network Trade Unions, Globalisation and Transnational Solidarity.

- Member of the International Network on Migration and Development (Red Internacional de Migración y Desarrollo).
- Member of European Sociological Association, Research Network Critical Political Economy.

ANDERS NEERGAARD

- 2008 Intersektionalitetsnätverket På Linköpings universitet.
- FAS Financed Network of Researchers: Trade unions, globalisation and transnational solidarity 2008–2010, scientific responsible.

MIKAEL RUNDQVIST

- Has been on the Board of the Swedish Political Science Association from 2006 until 2008.

MARITTA SOININEN

- Member of IMISCOE – International Migration, Integration and Social Cohesion – Network of Excellence.

CHARLES WOOLFSON

- Associate Fellow, New Zealand Work and Labour Market Institute, 2009–.
- Associate Member of Centre for Research on Racism, Ethnicity and Nationalism, University of Glasgow, 2008–.
- Professorial Visiting Fellow, Industrial Relations Research Centre, Australian School of Business, University of New South Wales, 2007–2010.
- Honorary Visiting Professor in International Employment Relations, Faculty of Management, Sir John Cass Business School, City University London, 2007–2010.
- Member of Economic and Social Research Council (UK) network on ‘The impact of migrant workers on the functioning of labour markets and industrial relations’.
- Member of British Sociological Association.
- Member of British Universities Industrial Relations Association (BUIRA).
- Member of the Marie Curie Fellowship Association.
- Editorial assignments: *International Journal of Sociology and Social Policy*, editorial board member; *Work, Employment and Society*, international advisory board member; *Economic and Labour Relations Review*,

international advisory board member; *Policy and Practice in Health and Safety*, founding editorial board member; *International Union Rights*, editorial board member; *International Journal of Occupational and Environmental Health*, editorial board member; *International Journal of Workplace Health Management*, founding editorial board member; *New Solutions: Journal of Environmental and Occupational Health Policy*, guest editor.

ALEKSANDRA ÅLUND

- Responsible scientific leader of the research network: UAMA (Education, work and civic agency) constituted around the research project with the same name; 2004–2009).
- Member of the steering committee for the European network IMILCO. International migration, informal labour market and community work in Europe (2004–2009).
- Coordinator of the SOCRATES/ERASMUS scientific cooperation between University of Linköping, J.W. Goethe-Universität, Frankfurt, University of Rethimnos, Crete and University of Florens.
- Editorial assignments: *Revija za Sociologiju* (Croatia, 2003–2009-), *Invandrare och Minoriteter* (Stockholm, 1999–2009-), *Migracijske i etnicke teme* (Croatia, 2000–2009-), *Socialvetenskaplig tidskrift* (2005–, 2009- Sverige), *Sociological analysis* (2007–2009- Albanien).
- International Scientific expert engagement: Appointed (2006–2009) to represent Sweden at IGC, Intergovernmental Council for MOST (Management of Social Transformation) International Social Science Programme at UNESCO.
- Member of the Strategic Advisory Board of the Danish National Institute of Social Research (2003, 2009–).
- Member of the international advisory board for CERMES (Centre for European Refugees, Migration and Ethnic Studies), Department of Political Sciences, New Bulgarian University, 2004–2009.
- Honorary Member of the Academic Board of the AIS (Albanian Institute of Sociology), 2007–9.
- Member of the expert council for the Willy Brandt professorship at the Malmö University College.

Stakeholder Cooperation

REMESO puts emphasis on having a vital connection to the surrounding society, stakeholders and anyone interested in our research. Hence many researchers are involved in collaborations that reach across the boundaries of the academy. And often researchers go back to their informants and participants in the research process for continued exchange of knowledge and feed-back in an interactive fashion after publication.

It is also crucial for REMESO to reach civil servants, activists and politicians with updated research findings, and to inform the on-going political and civil discussion connected to our research fields. Hence, we actively communicate results to the press, to politicians and to think-tanks.

■ Swedish Agency for Economic and Regional Growth (Nutek)

In the fall of 2008, REMESO concluded a project for the Swedish Agency for Economic and Regional Growth (NUTEK). The project results were presented in a report on the implementation of diversity and inclusion of immigrants and the objectives of the project are reported in work with applications for European Regional Funds in Sweden, as well as in a book-chapter in a forthcoming reader, with contributions from Mikael Rundqvist and Ragnar Andersson of REMESO. The results have been presented to the European Regional Funds and NUTEK, and also on a university course for policy practitioners. This work continues in 2009.

■ The European Social Fund's Thematic Group on Inclusion (Temagruppen för integration, TIA)

TIA is one of five Swedish Thematic Groups co-financed by the European Social Fund. The project is owned by REMESO with the specific aims of analysing practices and results of ESF projects, formulating policy recommendations for broader implementation, and for improvement of employment policies at local, national and European levels. TIA involves several actors (projects, researchers, officials, NGO representatives) in a partnership around four major themes: methods, regional and local development, health, and new arrivals. The partnership is organised in the form of knowledge-sharing seminars, meeting four times a year in different parts of the country. TIA's office consists of project leader Mikael Rundqvist, coordinator Anna-Carin Ramsten and analysts Åsa-Karin Engstrand and Ragnar Andersson. The chairman of TIA's steering group is a Member of the European Parliament, Mr. Göran Färm.

■ Collaboration with the Municipality of Norrköping

An important partner in this exchange with the surrounding world is the local authorities, with which we have several on-going cooperations. REMESO cooperates with the Municipality of Norrköping through exchange of knowledge and experiences, financially, as Norrköping is an important sponsor of REMESO, and through various collaborative ventures in projects that have branched out from the conversations we have upheld since the start. Since 2007 the Institute have met a couple of times each semester with representatives of the Municipality for exchange and discussion.

Evaluation of the TänkOm project ('Think Again')

REMESO will together with the Center for Municipal Studies, CKS, at LiU, evaluate the TänkOm project. The Swedish project reads in English as 'Think again'. It is an abbreviation for Safety, Changed Preconditons, Business Life, Knowledge and Local Development. It is a three-year urban development project in the cities of Linköping and Norrköping. Together it is funded by the European Social Fund with 18 million Swedish kronor. The purpose is to enhance occupation and growth in order to prevent unemployment and exclusion in the neighbourhoods of Skäggetorp and Ryd in Linköping, and, Klockaretorpet and Navestad/Ringdansen in Norrköping. The TänkOm project is organized in a job/training workshop in every neighbourhood. In these workshops there will be education, coaching, matching and entrepreneurial training.

Individual Activities

ERIK BERGGREN

- Lecture on Danish right-wing populism October, 2003, ABF, Norrköping.
- Lecture on the closing of the National Institute for Working Life, April, 2007, FOJO, Kalmar University College.

ANNA BREDSTRÖM

- Invited as expert to participate in a workshop on young people and sexuality organized by the National Board of Health and Welfare's Unit for National Co-ordination of HIV/STI Prevention, Stockholm, August 28–29, 2008.
- Invited to give a talk on 'From Cultural Pluralism to Cultural Assimilation: Migrants in Swedish HIV/AIDS Policy 1985–2005' at Forum for Sexual Health, organized by the unit for HIV/STI-prevention in Region Västra Götaland, November 12, 2008.
- Have been commissioned y to serve as a reviewer and discussant of a research report on Sexual Risk-taking and Migration National Board of Health and Welfare's Unit for National Co-ordination of HIV/STI Prevention, spring of 2009.

MAGNUS DAHLSTEDT

- Lecture at Delaktighet och integration i det framtida Sverige, arranged by Institutet för framtidsforskning, Konsthall C, Hökarängen, April 4, 2009
- Lecture at Motala bibliotek, arranged by Folkuniversitetet, April 7, 2009.
- Lecture at ESF-dagen 2009 – tema integration, arr. by European Social Fund, Malmö, December 17.
- 2008: Presentation of the book *Utbildning, arbete, medborgarskap*, Arbetets museum, Norrköping, January 18, 2008.
- Lecture at Vadstena forum 2008, Vadstena, June 2-4, 2008.
- Lecture at Arbetets museum, Norrköping, October 7, 2008.
- Member of Expert Group, National Board of Youth Affairs, 2008-.
- Member of Expert Group, Swedish Integration Fund, European Social Fund in Sweden, 2009-.

ÅSA-KARIN ENGSTRAND

- 2009–10: Commission for the Swedish Agency for Economic and Regional Growth ('Tillväxtverket'), together with Cecilia Englund, on Integration as policy and practice in the European regional development fund.
- 2009–10: Commission for the Swedish Agency for Economic and Regional Growth ('Tillväxtverket'), editor for the book, preliminary titled, *Möjligheternas marknad. Nya perspektiv på företagande och migration. (Market of opportunities. New perspectives on business and migration).*

SABINE GRUBER

- Invited to give a lecture 'Skolan gör skillnad. Etnicitet och institutionell praktik', at a teacher's seminar, Malmö, August 2009.
- Speaker at Symposium om hedersrelaterat förtryck och våld (Symposium about honourrelated oppression and violence), arranged by the Multicultural Center in Botkyrka and the Botkyrka municipality, November 2009.
- Member in the reference group for a research and development (FOU) project in Stockholm, *Ensamkommande flyktingbarn/ungdomar i Stockholms län*, 2008–2010.

- Invited to give a lecture ‘Så skapar och upprätthåller skolan etniska skillnader’, at a teacher’s seminar, Hvilans folkhögskola, Åkarp, February 2008.
- Invited to give a lecture ‘I skolans vilja att åtgärda ’hedersrelaterat’ våld: etnicitet, kön och våld’, at a seminar for primary health staff, Norrköping, May 2008.
- Commission for Skolverket. Engaged by the National Board for Education to make a curriculum about discrimination, to be used in further education for teachers, 2008.
- Member in the reference group for a research and development (FOU) project in Stockholm, Ensamkommande flyktingbarn/ ungdomar i Stockholms län, 2008–2010.
- Evaluation of a further education project for preschool teachers (Språk och kommunikation i flerspråkiga förskolegrupper), Linköping municipality, during 2007–2008.
- Evaluation of a development project for teachers (Från invandrartätt till internationellt), Linköping municipality, during 2007–2008.
- Invited to give a lecture ‘Skolan gör skillnad...’, at a teachers’ seminars at Naves-tadskolan, De Geer skolan and Vetlanda, in August 2007.
- Invited to give a lecture ‘I skolans vilja att åtgärda ’hedersrelaterat’ våld: etnicitet, kön och våld’, at a seminar, Norrköpings kommun, September 2007.
- Invited to give a lecture ‘Skolan gör skillnad...’, at a seminar, Pedagogiskt Centrum Linköping, October 2007.
- Invited to give a lecture ‘I skolans vilja att åtgärda ’hedersrelaterat’ våld: etnicitet, kön och våld’, at a seminar arranged for social worker by Center for Municipal Studies, Linköping University, December 2007.
- Evaluation of a development project for teachers (Från invandrartätt till internationellt), Linköping municipality, during 2007–2008.

PEO HANSEN

- Invited to present and disseminate research before the following organizations/institutions (2007–2009): ABF; Arena Program; Amnesty International; Globalisation Council (within the Swedish Ministry of Education and Research); Institute for Future Studies (Sweden); Kulturhuset Stockholm; Museum of World Culture Gothenburg (Världskulturmuseet); Re:Orient; Swedish International Development Cooperation Agency (SIDA); Swedish Ministry for Foreign Affairs; Swedish Ministry of Justice; Swedish Network of Asylum and Refugee Support (FARR); Swedish Red Cross.

RUNE JOHANSSON

- Public lecture at ‘Historiska klubben’ (the Historical Association), June 2009.

STEFAN JONSSON

- Senior Cultural Critic at *Dagens Nyheter*, Stockholm.
- Member of three-person jury of Danish Art Council, for Denmark’s ‘Formiddlingspris’, 2008.
- Member of scientific council of (Writer’s and Literary Translator’s International Congress), 2008.
- Member of scientific council of think tank Agora, Stockholm.
- Founding member of the Pia Arke Society, Copenhagen.
- Consultant to the Museum of World Culture, Gothenburg.

Public appearances

- Kulturhuset, Stockholm, 9 Dec 2009: ‘Sharing Society’.
- Spotlight, Norrköping Student Union: 8 Dec 2009: ‘A Decade in Retrospect’.
- ABF, Stockholm, 25 April 2009: ‘The Great World Crisis’.
- ABF, Stockholm, Center for Marxist Studies, 11 March 2009: ‘Cultural Politics from the Left’.
- ABF, Göteborg, 22 Nov 2008: ‘Literary Criticism and Society’ – A conversation with Klas Östergren, Agneta Klingspor, Nina Björk’.

- Museum of World Culture/ Museion, Gothenburg, 20 Oct 2008: 'Democracy and Multitude' – A discussion with Amanda Peralta and Fredrika Spindler'.
- ABF, Huddinge, 23 Oct 2008: 'The Others: Perspectives on Integration in Sweden'.
- ABF, Stockholm, Jan 2008. Paper at symposium on Frantz Fanon: 'Slaget om Europa'.
- European Social Forum / Malmö City Library, 19 Sept 2008: Lecture on democracy and the People.
- Södra teatern, Stockholm, 18 Sept 2008: Discussant with Fredrika Spindler, together with Toni Negri och Michael Hardt.
- Museum of Forgetting, Norrköping, 8 Nov 2007. Discussion on Iraq and Forgetting.
- Jewish Museum, Stockholm, 23 november 2007: Moderator at symposium on Marguerite Duras and the Political.
- Utrikespolitiska föreningen, Uppsala Universitet, 15 Nov 2007: Moderator at debate on freedom of expression and islamophobia, with Helena Benaouda, Lars Vilks et al.
- Riksantikvarieämbetet, Stockholm, 23 Aug 2007, föreläsning: 'Kulturarvet och plikten mot de döda'.
- Marine Museum, Stockholm, 23 Aug 2007: Lecture, 'Legacies of colonialism'.
- Utrikespolitiska föreningen, Umeå University, 5 May 2007: Lecture: 'Journalism and foreign policy'.
- Royal Library, 'Den sorte diamant', Copenhagen, 28 March 2007: Debate: 'Hvad skal vi med kulturjournalistiken?'.
- ABF, Stockholm 15 April 2007: lecture: 'Liberal freedom and revolutionary freedom'.
- Stockholm City Library, 21 Feb 2007: 'Literary Canons. Discussion with Ebba Witt-Brattström'.
- Skövde, City Theater, 9 Feb 2007: Conversation about racism and multiculturalism.

MARTIN KLINTHÄLL

- Expert advisor on return migration, Expert group on migration forecasting. Institute for Population Forecasting, Statistics Sweden.

- Report on entrepreneurs in Norrköping: 'Kartläggning av invandrarföretagande i Norrköping och Linköping'. April 2008. In cooperation with Norrköping Municipality.

BRANKA LIKIĆ-BRBORIĆ

- Expert commentator on 'Background document for policy on migration issues within the Swedish development cooperation. SIDA, September–December 2009.
- Interview 'Diaspora and Politics' given to the weekly Bosanska Posta (The Bosnian Post), 13 November 2009.

ANDERS NEERGAARD

- 070126 10.15 Participation in the Swedish radio programme 'Money' on migrants, discrimination and unemployment.
- 070212 13–16 Seminar organised by the Discrimination Ombudsman (DO) in Stockholm – Methods to visualise and combat discrimination in workplaces.
- 070217 Lecture on theories of Racism, Racialisation and Antiracism – Kvarnby Folk High School, Malmö.
- 070331 Lecture at the County Administrative Board in Falun – 'What is an immigrant good at – Right sort in the right place!'
- 070406 Lecture on Racism, Kvarnby Folk High School, Malmö.
- 070418 Stakeholder expert cooperation on diversity issues with Sif Syd (Swedish industrial white collar union 8today 'Unionen').
- 070421 Lecture at ABF Workers' Educational association) Stockholm – The Swedish working life and ethnic segmentation.
- 071025 Stakeholder expert cooperation on diversity issues with Sif Syd (Swedish industrial white collar union, 'Unionen').
- 080311 Lecture at a seminar organised by the Discrimination Ombudsman (DO) in Växjö – 'Discrimination in the labour market and in work places'.
- 080402 Lecture at a seminar organised by the Discrimination Ombudsman (DO) in Helsingborg – 'Discrimination in the labour market and in work places'.
- 090217 Strimmanföreläsning (Public lecture), Linköping university 'Know your place! – On immigrants, migrants and racialised within the Swedish labour market'.

MARTIN QVIST

- Leads Remesos evaluation of the project ‘Sörmlandslinjen,’ which aims to develop new working methods and forms of collaboration in the area of integration policy and introduction programmes for refugees. The project will also establish a regional platform in the county of Sörmland for the development of these programmes. It is co-financed by the European Refugee Fund.

MIKAEL RUNDQVIST

- Presentation of a study about diversity and growth at the regional level 2008-10-22 for managers at the Swedish Agency for Economic and Regional growth (formerly NUTEK) and the EU Regional Fund, Stockholm.
- Organizer and speaker at the workshop 2008-11-06 about integration and diversity at the education day, for personnel at the Swedish Agency for Economic and Regional growth (formerly NUTEK) and the EU Regional Fund, Hasselbacken, Stockholm.
- Co-organizer of seminars together with Norrköpings kommun 2009-04-22 (speaker Anders Neergaard), 2009-05-27 (Student Work), and 2009-10-14 (speaker Susanne Urban), Norrköping, Sweden.

JOSEFINA SYSSNER

- Almedalsveckan, Visby (2009), Jakten på det kreativa rummet (open lecture).
- Museum of Work (2009) Images of a city in change, (open lecture).
- Norrköping City Museum (2009) Images of a city in change, (open lecture).
- Norrköping Museum of Art (2009), Consumption as culture, (Guest lecture).
- Local Commissioners Network, Östergötland (2008) Place branding: governing through visions (guest lecture).
- Local Government Councillors Network (2008) Place branding: governing through visions (guest lecture).
- Östsam Regional Development Agency (2008), Place branding: a critical perspective (open lecture).
- Centre for Municipality Studies (2008), Tourism: a bid for local and regional development? (guest lecture).

- The National Board of Forensic Medicine, Linköping (2007), Ethnicity (Guest lecture).
- Norrköping Museum of Art (2007), Culture and economic development (Guest lecture).

HENNING SÜSSNER

- Interview in *Forskning och Framsteg*, 4/2009.

SUSANNE URBAN

- ‘The City as physical environment–life space–political arena’ a thematic group within the project ‘Lyskraft’, a collaboration between the Linköping University and the Norrköping Municipality.

CHARLES WOOLFSON

- Member of British Committee of International Centre for Trade Union Rights (ICTUR) (1989 to present).
- Consultant to international trades unions and global union federations: UNI-Europa, International Confederation of Trade Unions (ICTU), Nordic Federation of Building and Woodworking Unions, Norwegian Oil Trade Union (OFS), Nordic Finance Union (NFU).

ALEKSANDRA ÅLUND

- Member of the expert group; The Swedish part of the European Integration Fund /The European Social Fund (Svenska ESF Rådet) 2008–2009-.
- Member of the scientific advisory board, The Swedish National Board of Health and Welfare (2003–2009-).
- Member of the scientific advisory board, The Swedish National Board of Youth Affairs (2007–2009-).
- Member of the Swedish Council for MOST/ UNESCO.



EDUCATION

REMESO Graduate School in Migration, Ethnicity and Society

The REMESO Graduate School in Migration, Ethnicity and Society offers courses for Swedish and international postgraduate students (primarily PhD students, but to a lesser extent also MA students) that address a variety of theoretical, methodological and empirical perspectives on international migration. Courses are taught by REMESO staff and international guest lecturers. The course programme links current research on international migration and ethnic relations with studies on political economy, labour, citizenship, gender, culture and human rights. Individual courses address issues of asylum, documented and undocumented labour migration, social integration, urban segregation, racism and ethnic discrimination. In 2009 the Graduate School had 75 students from 17 different countries. Over 80 percent of those attending were PhD students.

■ Spring 2009

THEORIES AND POLITICS OF INTERNATIONAL MIGRATION

Theories and Politics of International Migration engage students in exploring both theoretical and empirical aspects of international migration. The course combines overviews of general theoretical and empirical developments with more specific analyses of various cases. Migration is related to the current debates on globalization, European integration, the national welfare state, various forms of identity politics and North-South relations, just to mention a few of the important topics that the course covers.

Faculty: Peo Hansen and Branka Likić-Brborić, Stefan Jonsson, Carl-Ulrich Schierup, Charles Woolfson. **Guest lecturer:** Russel King, University of Sussex.

MIGRATION, AND THE POLITICAL ECONOMY OF ETHNIC AND GENDER SEGMENTATION: ISSUES OF GLOBALISATION, WORK AND WELFARE

The main aim of this course is to encourage students to synthesize scholarship in the fields of political economy and welfare, with research on international migration and ethnic relations. Current perspectives in migration and ethnic- and gender studies will be related to major social science theories on economic restructuring, labour relations and the transformation of welfare regimes.

Faculty: Zoran Slavnic, Carl-Ulrik Schierup and Aleksandra Ålund. **Guest lecturer:** Helma Lutz, Johann Wolfgang Goethe University.

CITIZENSHIP, ETHNIC DIVISION AND SOCIAL EXCLUSION: NATIONAL AND POST-NATIONAL PERSPECTIVES

This course aims to engage students in exploring and critically analysing the normative aspects of citizenship. It sets out by surveying the theoretical literature on citizenship. Particular attention is paid to the past two decades' heightened focus on the interrelations between citizenship and migration, and on different models of citizenship. This, in turn, is discussed in the context of new theoretical models of citizenship—post-national, cosmopolitan, trans-national, etc—beyond and below the level of the nation-state.

Faculty: Magnus Dahlstedt, Josefina Syssner, Peo Hansen, Charles Woolfson and Khalid Khayati.

Guest lecturers: Eleonore Kofman, University of Middlesex, Charlie Jeffery, University of Edinburgh, Giuseppe Sciortino, University of Trento, Mekonnen Tesfahuney, Karlstad University.

■ Autumn courses 2009

INTRODUCTION TO RESEARCH METHODS IN ETHNIC AND MIGRATION STUDIES

This course provides an introduction to research methods in social sciences as applied in studies on ethnic relations, ethnic diversity, migration, discrimination, racism and social inclusion/exclusion. The aim is to develop a critical approach to research methods and to explore solutions to some of the major methodological dilemmas.

Faculty: Susanne Urban and Martin Klinthäll, Tünde Puskás, Peo Hansen, Alireza Behtoui, Anna Bredström.

Guest lecturer: Steve French, Keele University.

RESEARCH, POLICIES AND PERSPECTIVES ON DIVERSITY, EQUALITY AND DISCRIMINATION

This course highlights the differences between 'first and second generation antidiscrimination legislation', between reactive and proactive diversity measures and how they promote diversity and equality on grounds including ethnicity, race, religion, sexual orientation, age and disability. The course provides students with a deeper theoretical knowledge of diversity, discrimination and equality.

Faculty: Maritta Soinen and Lois Wise, Professor, Indiana University, USA, Charles Woolfson.

Guest lecturers: Masoud Kamali, University of Uppsala; Lucy Vickers, Oxford Brookes University.

MIGRATION AND LABOUR IN A GLOBAL ECONOMY

The course examines theoretical and methodological perspectives and policy debates over pathways to 'decent work'. It addresses alternative scenarios that would allow for the establishment of rights-based frameworks of social justice for labour migrants. In addition, the course explores the empirical interplay of legal frameworks for labour standards and 'actually existing' labour relations in different regional and geographic environments.

Faculty: Charles Woolfson and Branka Likić-Brborić, Anders Neergaard.

Guest lecturer: Gülay Toksöz, Ankara University.

■ Spring courses 2010 (planned 2009)

INTERNATIONAL MIGRATION, ETHNICITY AND GENDER: INTERSECTIONAL PERSPECTIVES ON LABOUR, POWER AND CITIZENSHIP

The course aims to engage students in exploring a range of scholarly debates on international migration, ethnicity and gender. It surveys new trends in European migration in relation to gender and the labour market. It will inform students about different dimensions of intersectional analysis and its relevance for migration studies. It trains students' ability to analyse interconnections of class, race'/ethnicity, gender and sexuality applied to case studies of domestic work, care work, sex work and health care among others.

Faculty: Aleksandra Ålund, Anna Bredström, Diana Mulinari.

Guest lecturers: Anna Gavanoas, Institute for Future Studies, Helma Lutz and Ursula Apatzsch, Johann Wolfgang Goethe University, Floya Anthias, Roehampton University, Giovanna Campani, University of Florence.

Doctoral Studies Programme (PhD Education)

The Doctoral studies programme at the former Department of Ethnic studies forms part of REMESO (since June 2008). The courses in the programme give PhD candidates insight into central dimensions of Swedish and International research on ethnicity and migration. The courses are distinctly interdisciplinary and course work and thesis writing are thoroughly integrated throughout the education. The Doctoral studies programme is also co-ordinated with the REMESO Graduate School's course programme.

During the years 2007–2009 the activity with the programme has been restricted to pursuing already ongoing PhD candidacies. However, REMESO is in the process of admitting at least five new PhD candidates to its Doctoral studies programme; the enrollment date is scheduled for September 2010.

■ Dissertations and examinations

GRADUATIONS 2007 – 2009

PhD:

Diana Avrahami – *Vi dansar inte på bordet – Lesbiska invandrarkvinnor i Sverige: stigmatisering & stolthet.*

Eleonora Narvselius – *The Nation's Brightest and Noblest: Narrative Identity and Empowering Accounts of the Ukrainian Intelligentsia in Post-1991 Lviv*, 2009, Linköpings University.

Khalid Khayati – *From Victim Diaspora to Transborder Citizenship – Diaspora Formation and Transnational Relations among Kurds in France and Sweden*, 2008, Linköpings University.

Anna Bredström – *Safe Sex, Unsafe Identities: Intersections of 'Race', Gender and Sexuality in Swedish HIV/AIDS Policy*, 2008, Linköping University.

Tünde Puskás – *'We belong to them': narratives of belonging, homeland and nationhood in territorial and non-territorial minority settings*, 2009, Bruxelles : P.I.E. Peter Lang.

Lic:

Ragnar Andersson, – *Implementering av integrationspolitik i den regionala utvecklingspolitiken, 1998–2004. Flernivåstyrning av komplexa mål i nätverk*, 2008, Linköpings University.

Martin Qvist – *Samordnat mottagande? Styrnings- och samordningsprocesser inom introduktions och flyktningmottagande*, *TheMES* No. 27/2008, REMESO, Linköpings university.

Inge Dahlstedt – *Education and labor market integration. The role of formal education in the process of ensuring a place in the occupational structure for natives and immigrants*, REMESO, Linköpings university.



Ongoing Doctoral Student Thesis Supervision

MAGNUS DAHSTEDT

- Co-supervisor. Martin Qvist ‘Co-ordinated refugee reception? Governance and collaborative efforts in Swedish integration programmes’, REMESO, Linköping University (assistant advisor, ongoing).

SABINE GRUBER

- Linda Häll, ‘Children’s constructions of age and gender in preschool’, Pedagogical Work, Linköping University (ongoing).

PEO HANSEN

- Sofie Tornhill, ‘Capital Visions: The Politics of Transnational Production in Nicaragua’, Dept. of Political Science, Stockholm University (assistant advisor, ongoing).
- Meriam Chatty, ‘Constructing the European Citizen’, Research School Conditions of Democracy, Örebro University (assistant advisor, ongoing).

RUNE JOHANSSON

- Principal advisor of Henning Süssner, PhD candidate. Thesis: ‘Schlesien bleibt unser ... Gemenskap, minne, historiebruk bland tyska flyktingar från östra Centraleuropa’.
- Assistant advisor of Mozghan Zachrison, PhD cand. Thesis: ‘The invisible voices: Adult immigrant’s language learning and communicative interaction in an individual and institutional context’.
- Principal advisor of Khalid Khayati, diss 2008.
- Principal advisor of Tünde Puskás, diss 2009.
- In 2007–2008, assistant advisor to Sigrid Saveljeff, Jenny Kiiskinen och Martin Qvist.

STEFAN JONSSON

- Principal advisor of Petra Bauer, doctoral candidate in Artistic Research, Konstfack and Kungliga tekniska högskolan (ongoing).

ANDERS NEERGAARD

- Co-supervisor. Caroline Tovatt, ‘Etnicitet, kön och sociala nätverk i informella rekryteringspraktiker’, REMESO, ISV, Linköpings universitet.

CHARLES WOOLFSON

- Epp Kallaste, ‘Evolution of Comparative Structures of Employee Participation in the Workplaces of Baltic new Member States’, University of Tartu, Estonia. (ongoing).
- Marina Jarvis, ‘Improvement of Safety Culture in Estonian Enterprises through Knowledge and Safety Management,’ Tallinn University of Technology (ongoing).

ALEKSANDRA ÅLUND

- Caroline Tovatt, ‘Recruitment through social networks: Reciprocities and strategies in working life’ (ongoing) REMESO, Linköping University.
- Catarina Lundqvist: ‘Horizons of opportunities: ethnicity, education and work in youth’s carrier narratives’. (ongoing, PhD theses to be defended May 2010). REMESO, Linköping University.
- Co-supervisor: Brigitte Sutter, ‘Survival strategies of transit migrants in Istanbul’, REMESO, Linköping University (ongoing).

Other

Beside these activities all researchers are engaged in the education at various department at LiU and other universities. It would occupy too much space to register all this teaching and advising in these pages. However, it should be emphasised that this makes up a great share of REMESO researchers’ teaching activities, and thus also, a very important part of the dissemination and communication activities of the Institute.



FINANCIAL REPORT



With the purpose of supporting a long term programme for the establishment, consolidation and operation of an excellent research environment, devoted to migration and ethnic relations at Linköping University during 2008–2017, the Swedish Council for Working Life and Social Research (FAS) approved in 2007 a 10 year grant of a total of 50 million SEK to Linköping University.

According to a decision by the University Board the center of excellence is placed at the Institute for Research on Migration, Ethnicity and Society, REMESO, which is located to the Department for Social and Welfare Studies. The Institute shall receive basic financing from the university. The extent of assured external financing shall be accounted for and the basic financing shall be extended throughout the entire duration of the programme period, with the possibility of successive additional grants.

REMESO has been successful in assuring external financing. Of special importance is the FAS excellence provision. According to a FAS decision from November 2007 an additional amount of 5 million SEK were added to this long term grant in support of the development and set up of an international Graduate School in Migration, Ethnicity and Society. Also, the Institute has received a number of other major external grants for research and development from FAS, The Swedish Research Council and EU Development Funds.

Today (2009) external grants amounts to a little more than 60 percent of the financing of the Institute. The regular means (in 2009 5.2 M, before OH) from the Faculty of Arts and Sciences amounts to around 20 per cent of the Institute's budget. In addition the Faculty has granted REMESO a smaller one-time grant for financing of PhD students. Around 15 per cent of the Institute's budget is made up by so called 'excellence grants' linked to individual professors and decided by the University Rector Mille Millnert.

Financial Result 2009

	RESULT 2009 (kkkr)	BUDGET 2009 (kkkr)
REVENUES		
Appropriations	9 348	8 955
Contributions	15 325	15 128
Total revenues	24 673	24 083
COSTS		
Staff	14 791	14 468
Travel	715	660
Literature	245	197
Operation costs	717	1 298
Overhead	4 869	5 058
Total costs	21 337	21 681
Result	3 336	2 402
<hr/>		
Dept. Of Ethnic Studies, balance	-2 059	-2 966
Capital balance, other	5 414	5 291
Total balance, capital	3 355	2 326
<hr/>		
Unused contributions, grants, etc.	8 215	10 510

REMESO

Institute for Research on
Migration, Ethnicity and Society
FAS Centre of Excellence

SECRETARY

Eva Rehnholm
eva.rehnholm@isv.liu.se
Ph: +46 11 36 32 38

GRADUATE SCHOOL COORDINATOR

Tünde Puskás
Ph: +46 11 36 34 19

INFORMATION AND RESEARCH COORDINATOR

Erik Berggren
erik.berggren@liu.se
Ph: +46 11 36 32 66

POSTAL ADDRESS

Linköping University
ISV-REMESO
601 74 Norrköping
SWEDEN

VISITING ADDRESS

Campus Norrköping
Bomullsspinneriet
Holmentorget 10

www.isv.liu.se/remeso



ISV

